



E300N/E500N C-40/HC-40 5" Frame Depth Sliding Door

E300N/E500N SERIES SLIDING DOOR

The Quaker Emerge E300N/E500N Series Sliding door is ideal for a variety of applications including - Energy Efficient, Institutions, Education, Apartments and Assisted Living.

FEATURES

- ◇ **Commercial Framing System**
 - 5" main frame
 - 0.062" wall thickness of frame and sash
- ◇ **Thermally Enhanced Design**
 - Azon pour and debridge thermal break is ½" wide in all main frame and vent rail extrusions
 - Solid extruded aluminum framing: 0.078" metal thickness in sill with 0.062" thickness used elsewhere
 - Fin-seal weatherstripping
 - Coped corner construction
 - Positive interlocks
 - Full width lift handles
- ◇ **Glazing**
 - 1" insulated glass
- ◇ **Hardware**
 - Heavy-duty rollers system operates in stainless steel roller track, making operation easy and smooth
 - Thumb latch
- ◇ **Screen**
 - Extruded aluminum screen frame with BetterVue™ mesh

BENEFITS

- ◇ The capacity to match exterior colors for unique project facades
- ◇ The ability to facilitate custom sizes for taller and wider door openings

PERFORMANCE

- ◇ Structural & Thermal (test reports or thermal simulations available upon request)

Model	E300N		E500N	
	Active-Fixed	Fixed-Active-Fixed	Active-Fixed	Fixed-Active-Fixed
AAMA/WDMA/CSA 101/IS.2/A440-08 Rating	C-40	C-40	HC-40	HC-40
Structural Load P.S.F.	50.15	60.15	60.15	60.15
Air at 50 MPH (cfm/ft ²)	0.068	0.05	0.16	0.19
Water (No Penetration) P.S.F.	6.07	6.07	7.52	6.07
U-Value	0.33 - 0.40		0.34 - 0.40	
SHGC	0.15 - 0.53		0.14 - 0.53	
Test size	95" × 83"	143" × 83"	123" × 95"	160" × 98"

Operating Force:

E300N Active-Fixed
28 lbf (initiate motion),
17 lbf (maintain motion),
<1 lbf (latches)

E300N Fixed-Active-Fixed
15 lbf (initiate motion),
15 lbf (maintain motion),
<1 lbf (latches)

E500N Active-Fixed
37.3 lbf (initiate motion),
24.3 lbf (maintain motion),
<1 lbf (latches)

E500N Fixed-Active-Fixed
30 lbf (initiate motion),
22.6 lbf (maintain motion),
1 lbf (latches)

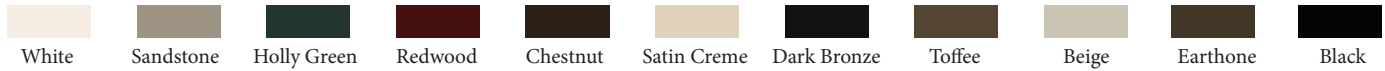
Our products are tested to the standards of and certified by the American Architectural Manufacturer's Association, the National Fenestration Rating Council and the Window & Door Manufacturers Association.



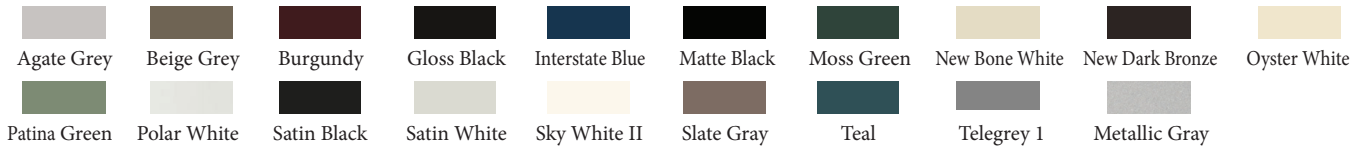
ARCHITECTURAL PAINT COATINGS AND FINISHES

◇ Baked on powder coat finish meets ANSA/AAMA 2604 specs and is available in unlimited colors

- 11 Popular Colors



- 19 Impressive Colors



- 7 Resemble Colors (painted finish resembling anodized)



- Unlimited Custom Colors

* Printed colors shown here may not accurately depict actual painted colors. Color samples are available upon request.

◇ ANSA/AAMA 2605 powder coat finishes

◇ AAMA 611-98 Class I clear and tinted anodized finishes



Our products are tested to the standards of and certified by the American Architectural Manufacturer's Association, the National Fenestration Rating Council and the Window & Door Manufacturers Association.



QUAKER
COMMERCIAL WINDOWS AND DOORS

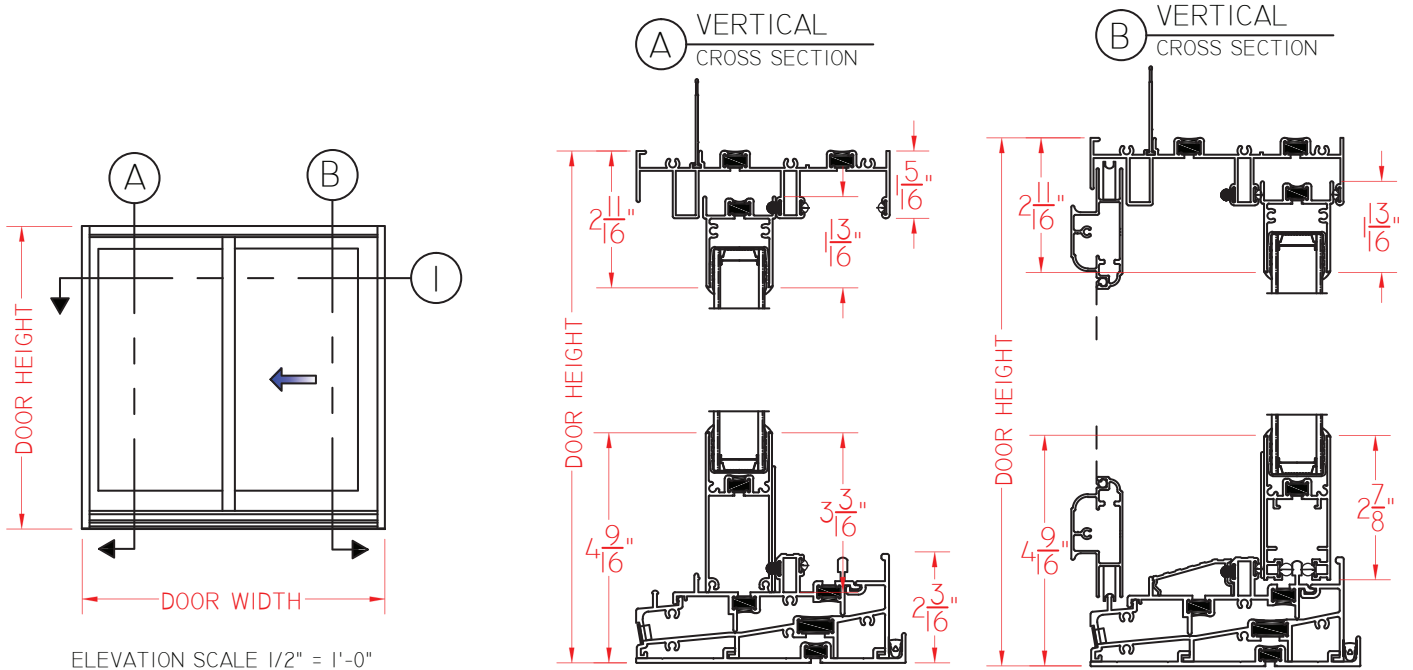
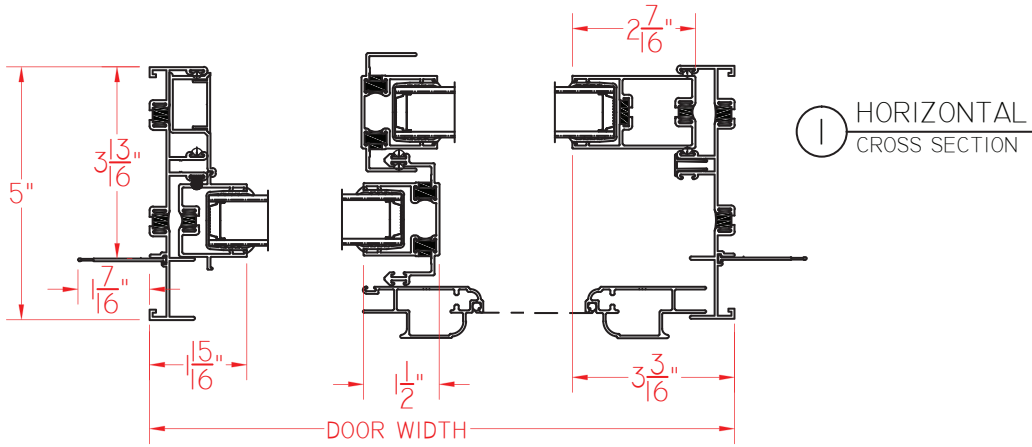


QUAKER
COMMERCIAL WINDOWS AND DOORS



**E300N
C-40
5" Frame Depth
Sliding Door**

E300N SERIES SLIDING DOOR (2P)



03.02.2015 VERSION 1.0

SCALE 1:4

Our products are tested to the standards of and certified by the American Architectural Manufacturer's Association, the National Fenestration Rating Council and the Window & Door Manufacturers Association.



QUAKER
COMMERCIAL WINDOWS AND DOORS

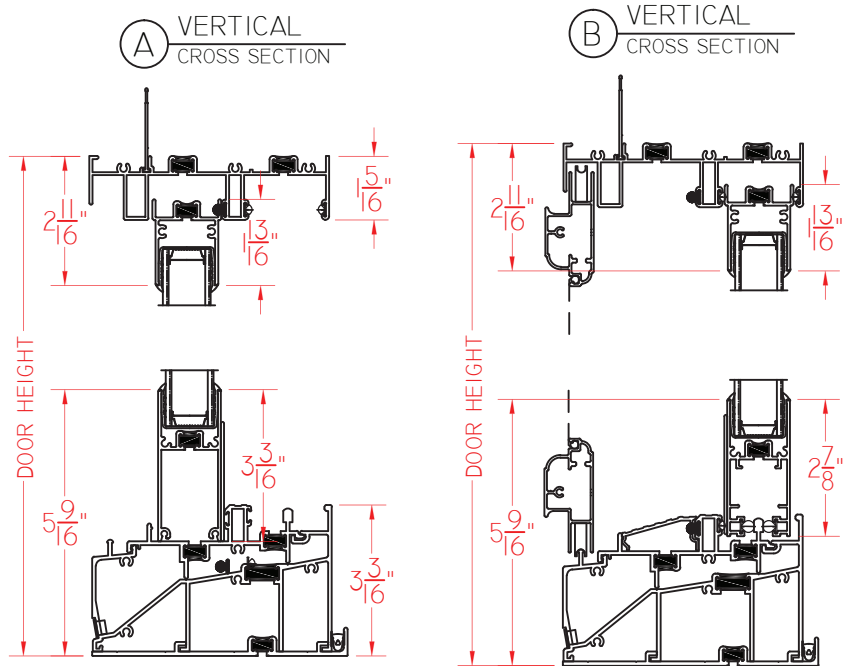
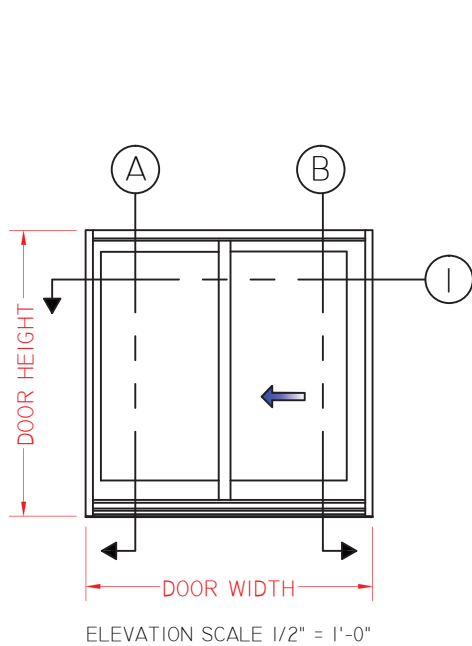
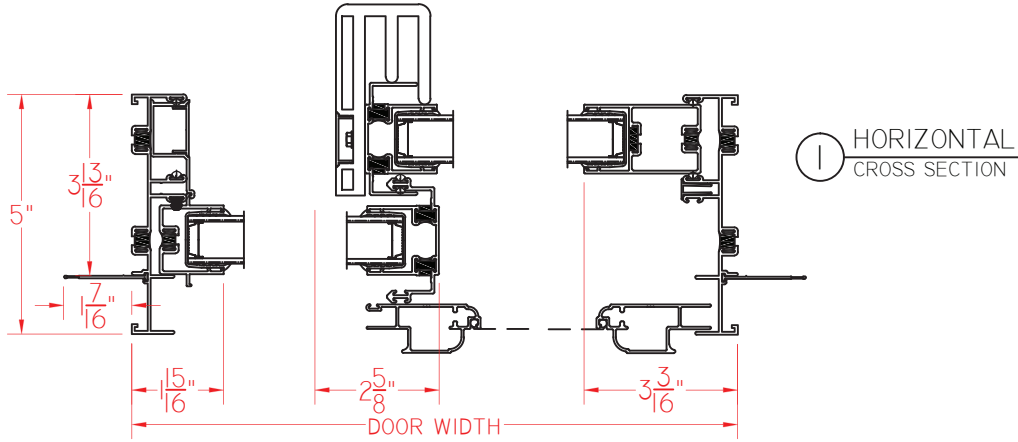


QUAKER
COMMERCIAL WINDOWS AND DOORS



**E500N
HC-40
5" Frame Depth
Sliding Door**

E500N SERIES SLIDING DOOR (2P)



03.02.2015 VERSION 1.0

SCALE 1:4

Our products are tested to the standards of and certified by the American Architectural Manufacturer's Association, the National Fenestration Rating Council and the Window & Door Manufacturers Association.



QUAKER
COMMERCIAL WINDOWS AND DOORS