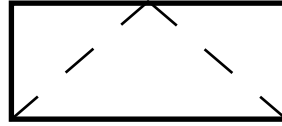




**QUAKER**  
COMMERCIAL WINDOWS AND DOORS



**E600 Series**

**AW-PG70**

**3 1/4" Frame Depth**

**Awning (Project-Out)**

## E600 SERIES AWNING (PROJECT-OUT)

The Quaker Emerge E600 Series Awning window is ideal for a variety of applications including - Energy Efficient, Institutions, Education, Apartments and Assisted Living.

### FEATURES

- ◇ **Commercial Framing System**
  - 3 1/4" main frame
  - 0.094" wall thickness of interior and exterior walls, 0.078" wall thickness elsewhere
- ◇ **Thermally Enhanced Design**
  - Azon pour and debridge thermal break is 1/2" wide in all main frame and vent rail extrusions
  - Assembled with heavy duty Monticelli cast aluminum corner keys
  - Mitered and pressure sealed internally with injected silicone through corner key passages. Wrap-around marine glazing
- ◇ **Glazing**
  - 1" insulated glass
- ◇ **Hardware**
  - Butt hinges or 4-Bar hinges available on both crank-out and push-out windows
  - Heavy-commercial Truth Contour™ locking system (Crank-out only)
  - Heavy-commercial Truth Contour™ multipoint lock with push handle (no crank hardware)
  - Low profile cam handle (Push-out only)
  - Pole Operated handle (Push-out only)
  - Custodial lock with removable handle (Push-out only)
- ◇ **Screen**
  - Wicket sreet (Push-out only)
  - Extruded aluminum screen frame with BetterVue™ mesh (Crank-out only)
- ◇ **Meets ADA Requirements (ADA Handle Required, Crank-out only)**

### BENEFITS

- ◇ The capacity to match exterior colors for unique project facades
- ◇ The ability to facilitate large sizes for taller and wider window openings

### OPTIONS

- ◇ **Available Configurations**
  - Project-out awning
  - Push-out or Crank-out
  - Wire frame capabilities
- ◇ **Muntin Choices**
  - Internal or simulated divided lites available
- ◇ **Limited travel hardware**
- ◇ **Nailing Fin**
- ◇ **Screen**
  - Extruded aluminum screen frame with aluminum wire mesh
  - Extruded aluminum screen frame with sunscreen mesh
  - Extruded aluminum screen frame with stainless steel 0.009" thickness mesh
- ◇ **Glazing**
  - Capillary tubes
  - Argon gas
  - Optional glazing stop to accept 1 3/8" (triple) glazing
  - Wide variety of glazing, tinting and thickness options
- ◇ **Panning & Trim Choices**
  - Wide variety of panning, receptor and trim available
- ◇ **Mulling**
  - Wide variety of structural mulls

### PERFORMANCE

- ◇ **Structural & Thermal** (test reports or thermal simulations available upon request)

Model	Awning (Project-Out)
AAMA/WDMA/CSA 101/I.S.2/A440-08 Rating	AW-PG70
Structural Load P.S.F.	105.26
Air at 50 MPH (cfm/ft <sup>2</sup> )	0.01
Water (No Penetration) P.S.F.	12.11
U-Value (with Low-E and Argon)	0.32-0.36
SHGC (with Low-E and Argon)	0.12-0.26

Window test size: 60" x 36"

Operating Force: 12 lbf (maintain motion), 17 lbf (latches)

4 lbf (ADA Handle maintain motion), 2 lbf (ADA Handle latches)

Our products are tested to the standards of and certified by the American Architectural Manufacturer's Association, the National Fenestration Rating Council and the Window & Door Manufacturers Association.

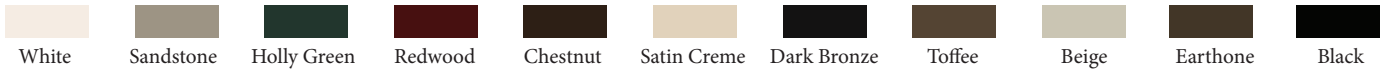


**QUAKER**  
COMMERCIAL WINDOWS AND DOORS

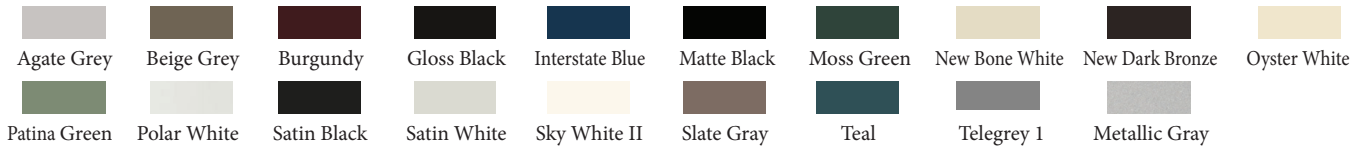
## ARCHITECTURAL PAINT COATINGS AND FINISHES

◇ Baked on powder coat finish meets ANSA/AAMA 2604 specs and is available in unlimited colors

- 11 Popular Colors



- 19 Impressive Colors



- 7 Resemble Colors (painted finish resembling anodized)

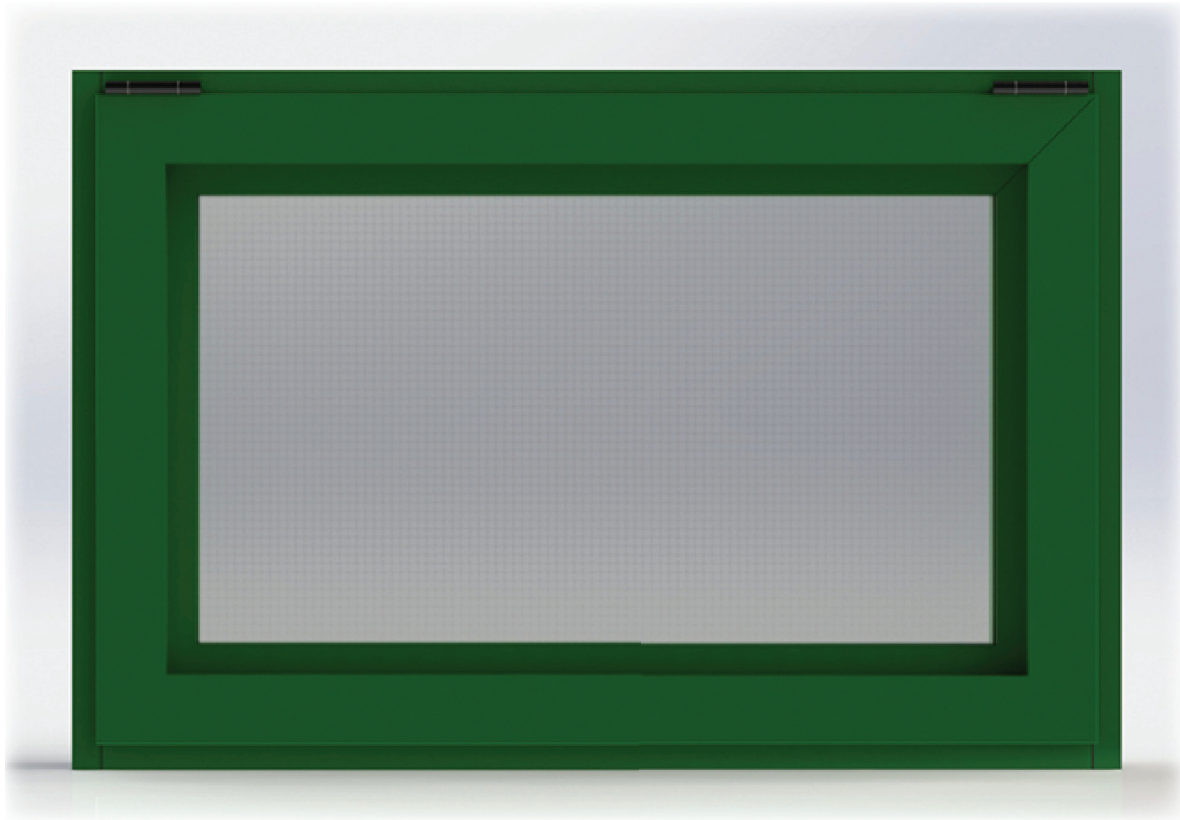


- Unlimited Custom Colors

\* Printed colors shown here may not accurately depict actual painted colors. Color samples are available upon request.

◇ ANSA/AAMA 2605 powder coat finishes

◇ AAMA 611-98 Class I clear and tinted anodized finishes



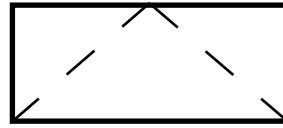
Our products are tested to the standards of and certified by the American Architectural Manufacturer's Association, the National Fenestration Rating Council and the Window & Door Manufacturers Association.



**QUAKER**  
COMMERCIAL WINDOWS AND DOORS



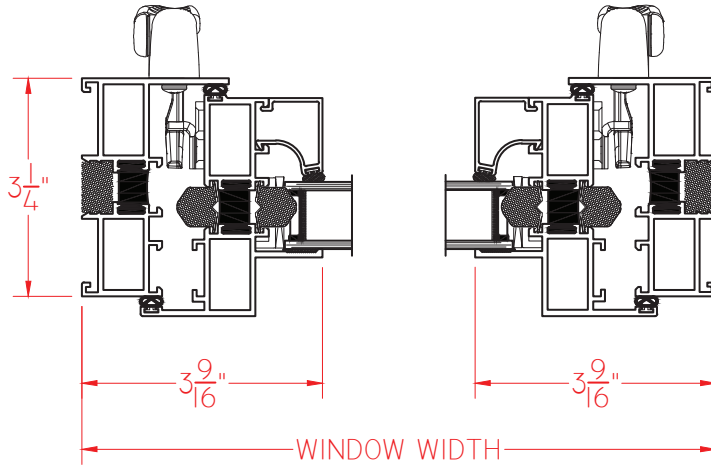
**QUAKER**  
COMMERCIAL WINDOWS AND DOORS



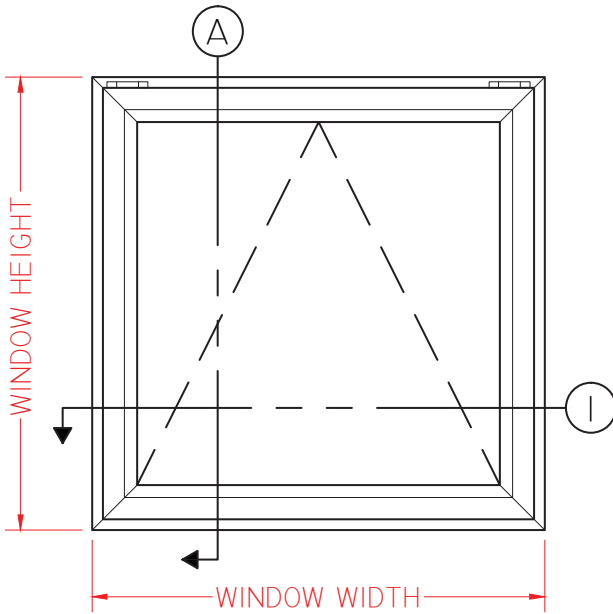
**E600 Series**  
**AW-PG70**  
**3 1/4" Frame Depth**  
**Awning (Project-Out)**

# E600 AWN (CRANK OUT)

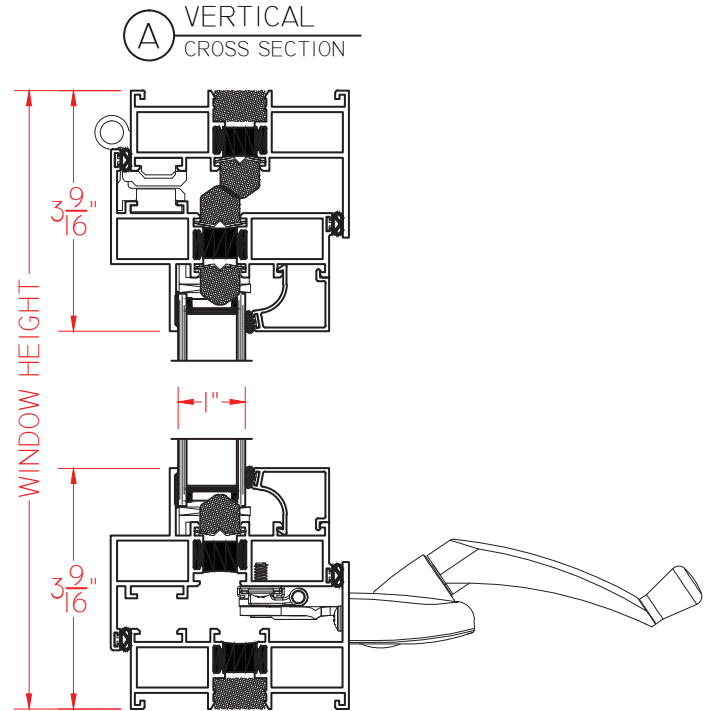
This document contains confidential and proprietary information intended for the private use of Quaker.  
© 2016 Quaker Window Products Co., INC. All rights reserved.  
Quaker reserves the right to change any/all designs without notice. Due to periodic re-certification requirements, result shown may vary.



① HORIZONTAL  
CROSS SECTION



ELEVATION SCALE 3/4" = 1'-0"



Ⓐ VERTICAL  
CROSS SECTION

E600 AWNING (CRANK OUT) 01.11.2016 VERSION 2

SCALE 1:3

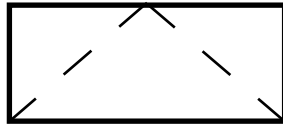
Our products are tested to the standards of and certified by the American Architectural Manufacturer's Association, the National Fenestration Rating Council and the Window & Door Manufacturers Association.



**QUAKER**  
COMMERCIAL WINDOWS AND DOORS



**QUAKER**  
COMMERCIAL WINDOWS AND DOORS



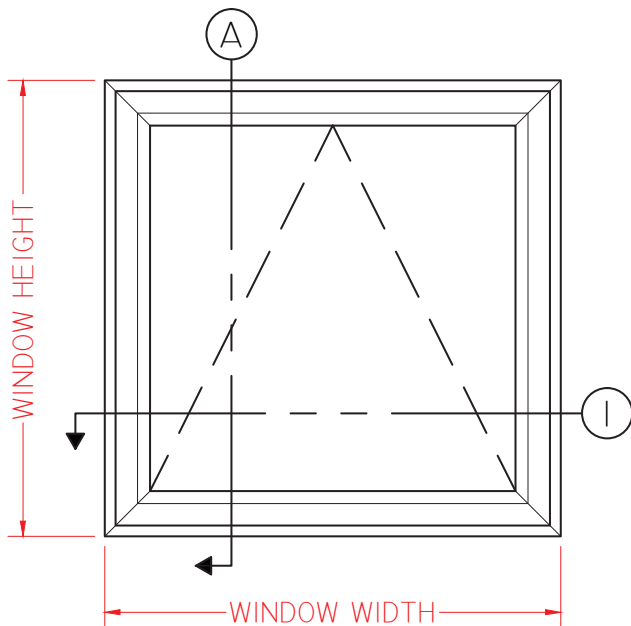
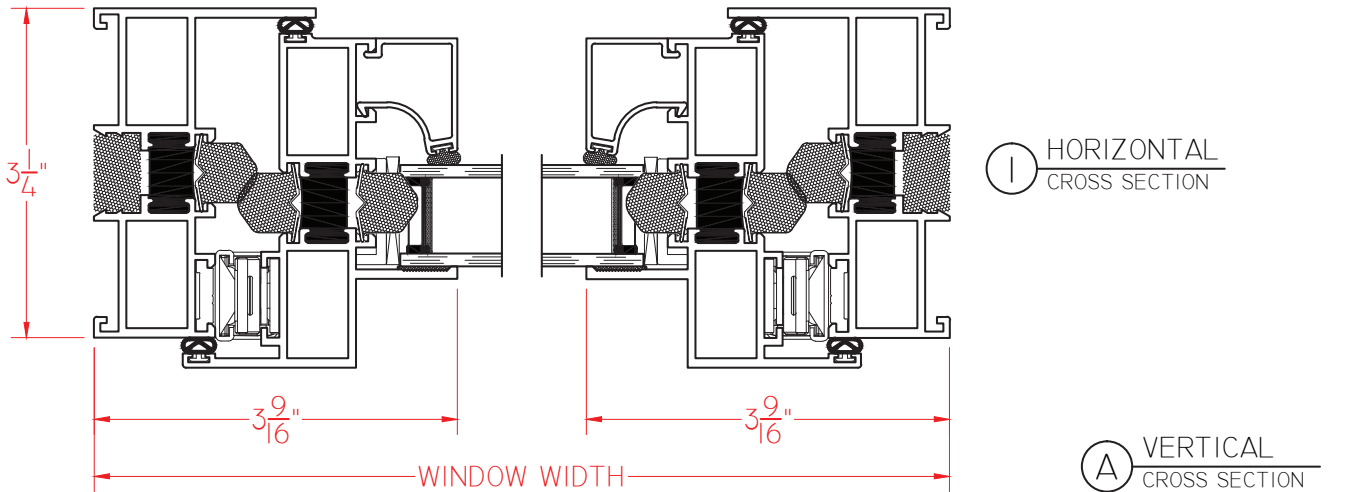
**E600 Series**

**AW-PG70**

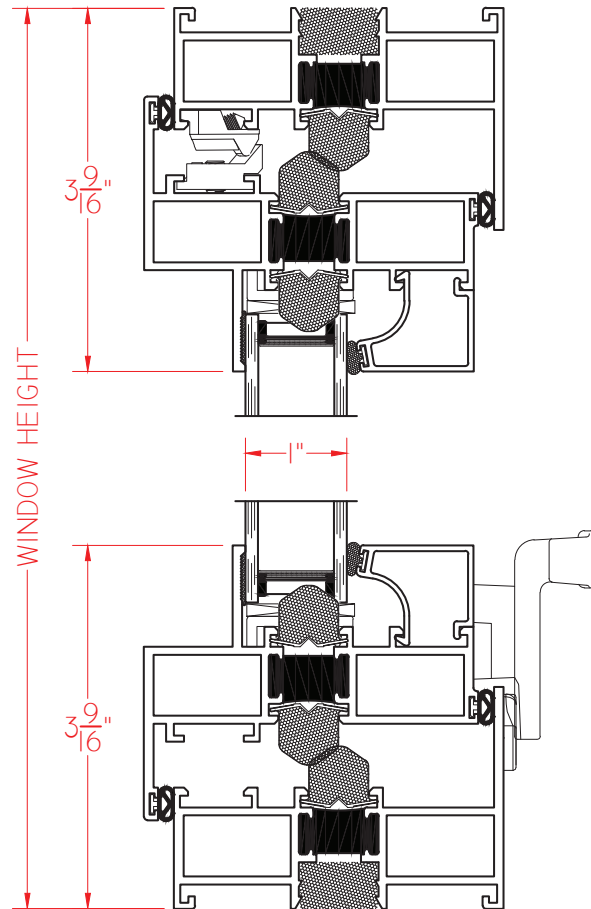
**3 1/4" Frame Depth**

**Awning (Project-Out)**

# E600 AWN (PUSH OUT)



ELEVATION SCALE 3/4" = 1'-0"



This document contains confidential and proprietary information intended for the private use of Quaker.  
© 2016 Quaker Window Products Co., INC. All rights reserved.  
Quaker reserves the right to change any/all designs without notice. Due to periodic re-certification requirements, result shown may vary.

E600 AWNING (PUSH OUT) 01.11.2016 VERSION 2

SCALE 1:2

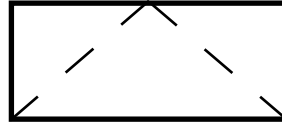
Our products are tested to the standards of and certified by the American Architectural Manufacturer's Association, the National Fenestration Rating Council and the Window & Door Manufacturers Association.



**QUAKER**  
COMMERCIAL WINDOWS AND DOORS



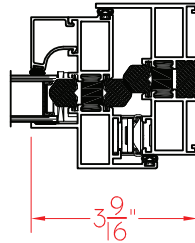
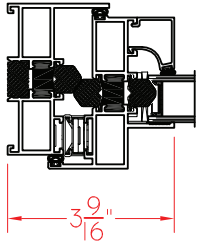
**QUAKER**  
COMMERCIAL WINDOWS AND DOORS



**E600 Series**  
**AW-PG70**  
**3 1/4" Frame Depth**  
**Awning (Project-Out)**

# E600 AWN/HOP

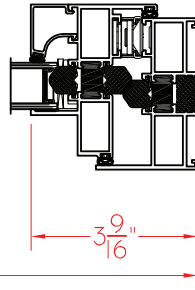
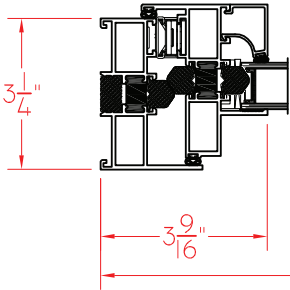
This document contains confidential and proprietary information intended for the private use of Quaker.  
© 2016 Quaker Window Products Co., INC. All rights reserved.  
Quaker reserves the right to change any/all designs without notice. Due to periodic re-certification requirements, result shown may vary.



① HORIZONTAL CROSS SECTION

3 9/16"

3 9/16"



② HORIZONTAL CROSS SECTION

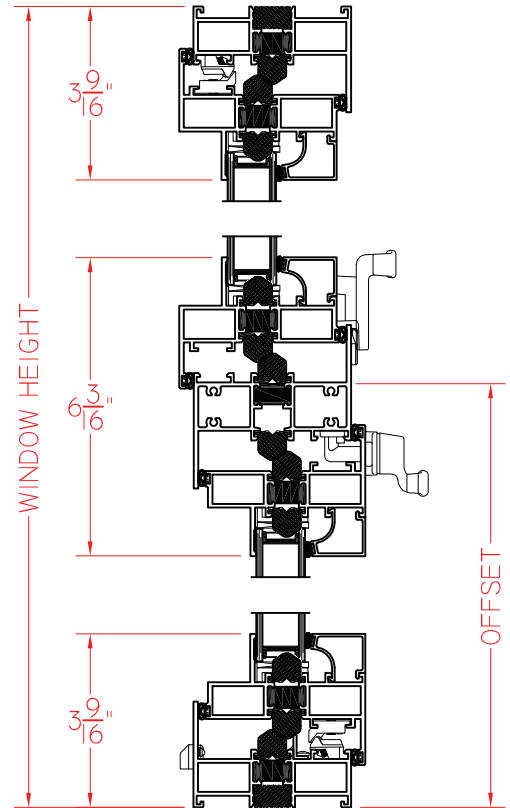
3 1/4"

3 9/16"

3 9/16"

WINDOW WIDTH

Ⓐ VERTICAL CROSS SECTION



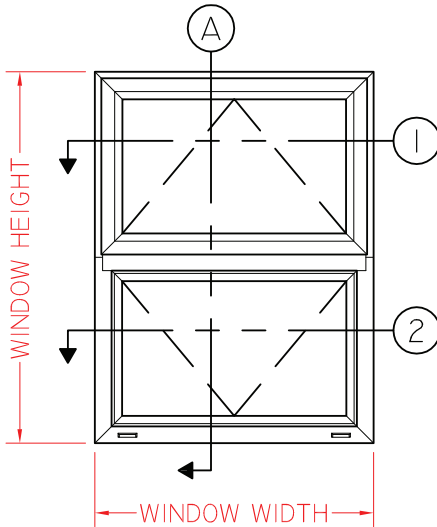
3 9/16"

6 3/16"

3 9/16"

WINDOW HEIGHT

OFFSET



WINDOW HEIGHT

WINDOW WIDTH

ELEVATION SCALE 1/2" = 1'-0"

01.12.2016 VERSION 2

SCALE 1:4

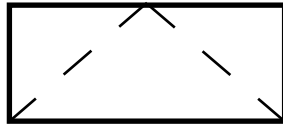
Our products are tested to the standards of and certified by the American Architectural Manufacturer's Association, the National Fenestration Rating Council and the Window & Door Manufacturers Association.



**QUAKER**  
COMMERCIAL WINDOWS AND DOORS



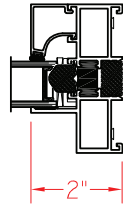
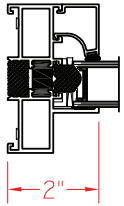
**QUAKER**  
COMMERCIAL WINDOWS AND DOORS



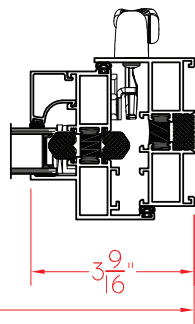
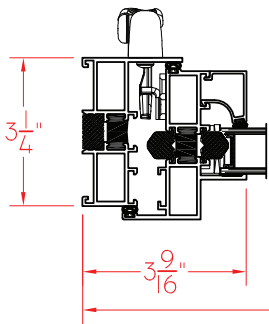
**E600 Series**  
**AW-PG70**  
**3 1/4" Frame Depth**  
**Awning (Project-Out)**

# E600 FIXED/AWN

This document contains confidential and proprietary information intended for the private use of Quaker.  
© 2016 Quaker Window Products Co., INC. All rights reserved.  
Quaker reserves the right to change any/all designs without notice. Due to periodic re-certification requirements, result shown may vary.



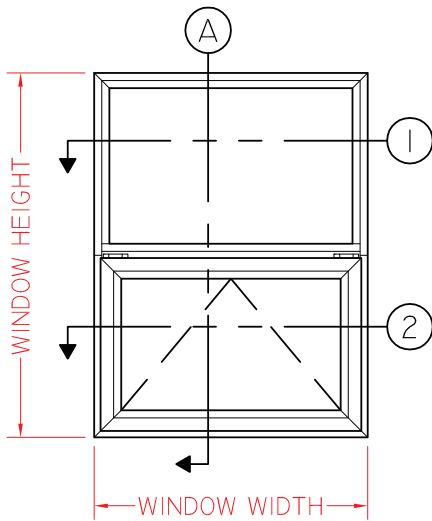
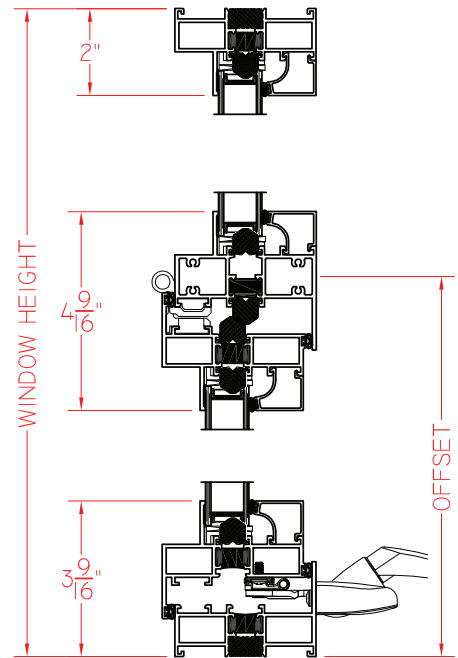
① HORIZONTAL CROSS SECTION



② HORIZONTAL CROSS SECTION

WINDOW WIDTH

Ⓐ VERTICAL CROSS SECTION



ELEVATION SCALE 1/2" = 1'-0"

01.12.2016 VERSION 2

SCALE 1:4

Our products are tested to the standards of and certified by the American Architectural Manufacturer's Association, the National Fenestration Rating Council and the Window & Door Manufacturers Association.



**QUAKER**  
COMMERCIAL WINDOWS AND DOORS