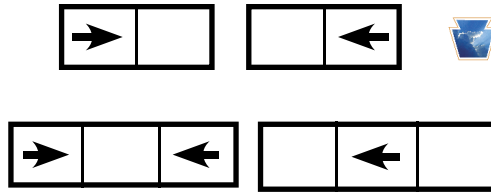




**QUAKER**  
COMMERCIAL WINDOWS AND DOORS



**Keystone K200 Series**  
**CW-PG40**  
**2 3/8" Frame Depth**  
**Horizontal Slider**

## K200 SERIES HORIZONTAL SLIDER

The Quaker Keystone K200 Series Horizontal Slider window is ideal for a variety of applications including - Hospitality, Institutions, Education, Apartments, Assisted Living and Housing Authority.

### FEATURES

- ◇ **Commercial Framing System**
  - 2 3/8" main frame
  - 0.062" wall thickness of frame and sash
- ◇ **Thermally Enhanced Design**
  - Azon pour and debridge thermal break is 1/2" wide in all main frame and vent rail extrusions
  - Frame and sash mortised and joined with screw fasteners
  - Positive interlocks
  - Full length pull rail
- ◇ **Glazing**
  - 3/4" insulated glass
- ◇ **Hardware**
  - Brass rollers with stainless steel axle pins for easy operation
  - Sweep lock
- ◇ **Screen**
  - Extruded aluminum screen frame with BetterVue™ mesh

### BENEFITS

- ◇ The capacity to match exterior colors for unique project facades
- ◇ The ability to facilitate large sizes for taller and wider window openings

### PERFORMANCE

- ◇ Structural & Thermal (test reports or thermal simulations available upon request)

Model	Horizontal Slider
AAMA/WDMA/CSA 101/I.S.2/A440-08 Rating	CW-PG40
Structural Load P.S.F.	60.15
Air at 50 MPH (cfm/ft <sup>2</sup> )	0.08
Water (No Penetration) P.S.F.	6.06
U-Value (with Low-E and Argon)	0.38 - 0.44
SHGC (with Low-E and Argon)	0.14 - 0.33

Window test size: 72" x 60"

Operating Force: 16 lbf (maintain motion), 3 lbf (locks)

### OPTIONS

- ◇ **Available Configurations**
  - Fixed-Active
  - Active-Fixed
  - Active-Fixed-Active
  - Fixed-Active-Fixed
- ◇ **Muntin Choices**
  - Internal or simulated divided lites available
- ◇ **Limited Travel Latch**
- ◇ **Nailing Fin**
- ◇ **Screen**
  - Extruded aluminum screen frame with aluminum wire mesh
  - Extruded aluminum screen frame with sunscreen mesh
  - Extruded aluminum screen frame with stainless steel 0.009" thickness mesh
  - Security screen (limitations apply)
- ◇ **Glazing**
  - Capillary tubes
  - Argon gas
  - Wide variety of glazing, tinting and thickness options
- ◇ **Panning & Trim Choices**
  - Wide variety of panning, receptor and trim available
- ◇ **Mulling**
  - Wide variety of structural mulls
- ◇ **Specialty**
  - Attached exterior or interior storm window
  - Extension jambs
  - Louver



Our products are tested to the standards of and certified by the American Architectural Manufacturer's Association, the National Fenestration Rating Council and the Window & Door Manufacturers Association.

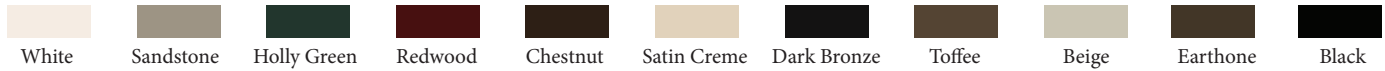


**QUAKER**  
COMMERCIAL WINDOWS AND DOORS

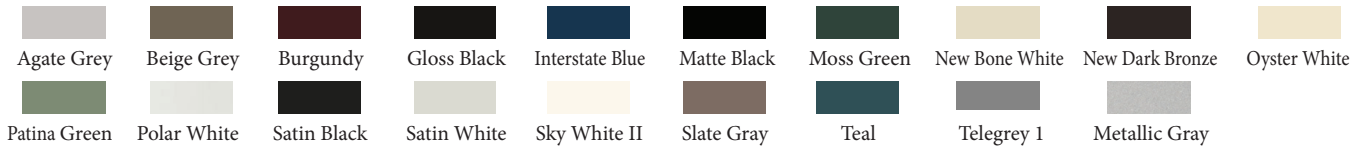
## ARCHITECTURAL PAINT COATINGS AND FINISHES

◇ Baked on powder coat finish meets ANSA/AAMA 2604 specs and is available in unlimited colors

- 11 Popular Colors



- 19 Impressive Colors



- 7 Resemble Colors (painted finish resembling anodized)



- Unlimited Custom Colors

\* Printed colors shown here may not accurately depict actual painted colors. Color samples are available upon request.

◇ ANSA/AAMA 2605 powder coat finishes

◇ AAMA 611-98 Class I clear and tinted anodized finishes

Our products are tested to the standards of and certified by the American Architectural Manufacturer's Association, the National Fenestration Rating Council and the Window & Door Manufacturers Association.



**QUAKER**  
COMMERCIAL WINDOWS AND DOORS



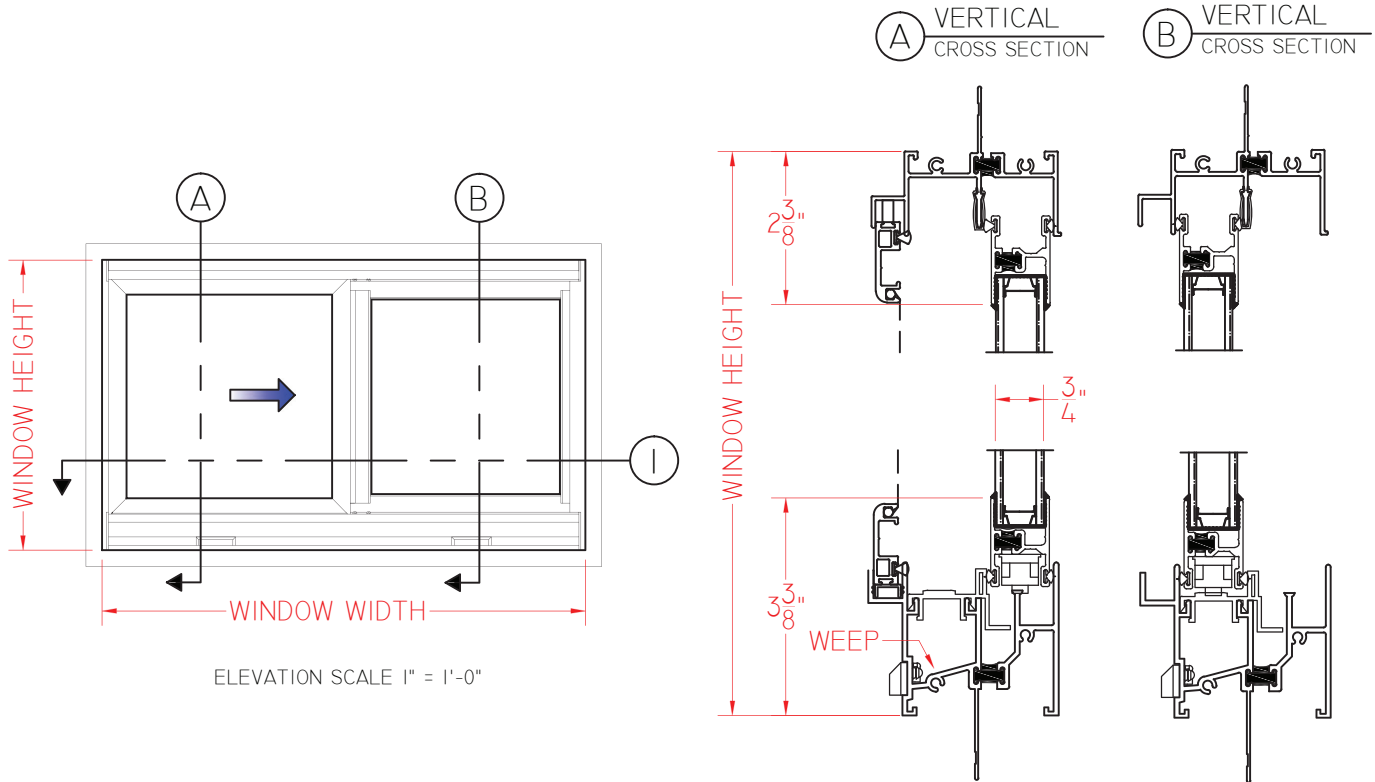
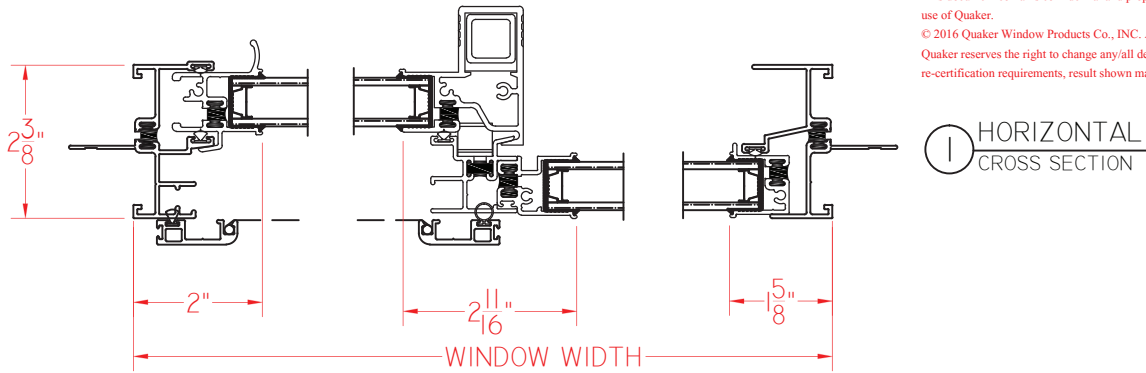
**QUAKER**  
COMMERCIAL WINDOWS AND DOORS



Keystone **K200 Series**  
SERIES **CW-PG40**  
**2 3/8" Frame Depth**  
**Horizontal Slider**

# K200 SL WITH NAILING FIN

This document contains confidential and proprietary information intended for the private use of Quaker.  
© 2016 Quaker Window Products Co., INC. All rights reserved.  
Quaker reserves the right to change any/all designs without notice. Due to periodic re-certification requirements, result shown may vary.



K200 HORIZONTAL SLIDER WITH NAIL FIN 02.04.2015 VERSION 1.0

SCALE 1:3

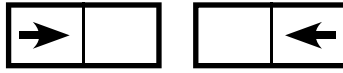
Our products are tested to the standards of and certified by the American Architectural Manufacturer's Association, the National Fenestration Rating Council and the Window & Door Manufacturers Association.



**QUAKER**  
COMMERCIAL WINDOWS AND DOORS



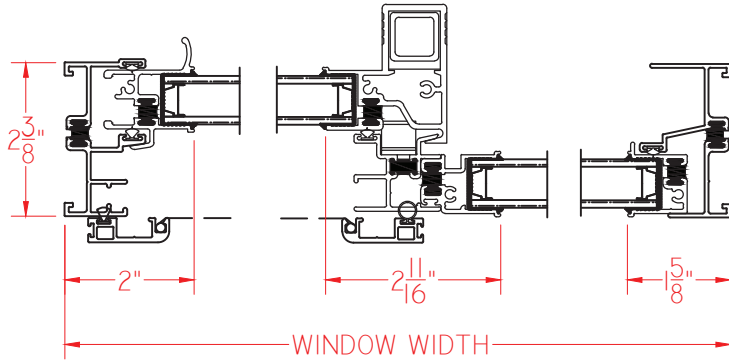
**QUAKER**  
COMMERCIAL WINDOWS AND DOORS



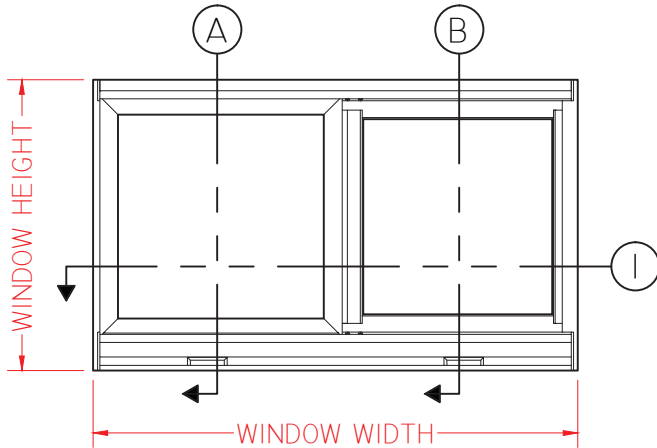
Keystone **K200 Series**  
SERIES **CW-PG40**  
**2 3/8" Frame Depth**  
**Horizontal Slider**

# K200 SL WITHOUT NAILING FIN

This document contains confidential and proprietary information intended for the private use of Quaker.  
© 2016 Quaker Window Products Co., INC. All rights reserved.  
Quaker reserves the right to change any/all designs without notice. Due to periodic re-certification requirements, result shown may vary.



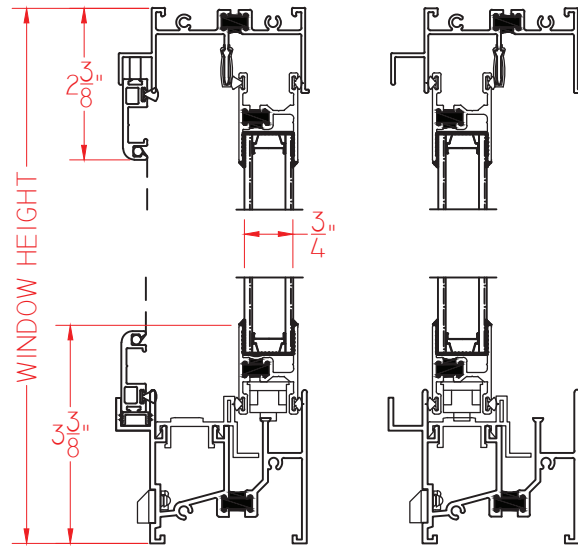
① HORIZONTAL CROSS SECTION



ELEVATION SCALE 1" = 1'-0"

Ⓐ VERTICAL CROSS SECTION

Ⓑ VERTICAL CROSS SECTION



K200 HORIZONTAL SLIDER 02.04.2015 VERSION 1.0

SCALE 1:3

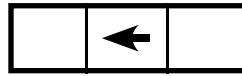
Our products are tested to the standards of and certified by the American Architectural Manufacturer's Association, the National Fenestration Rating Council and the Window & Door Manufacturers Association.



**QUAKER**  
COMMERCIAL WINDOWS AND DOORS



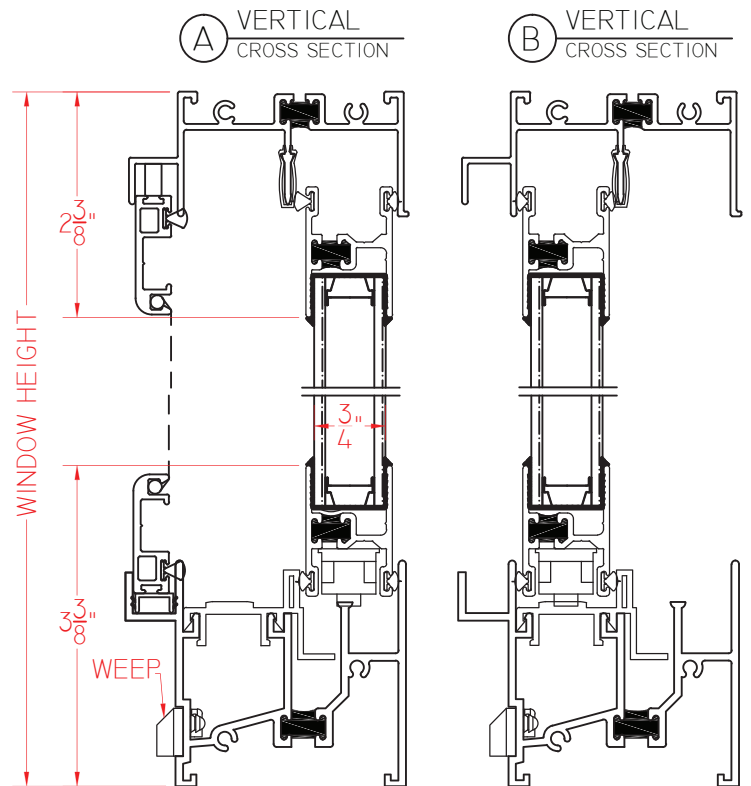
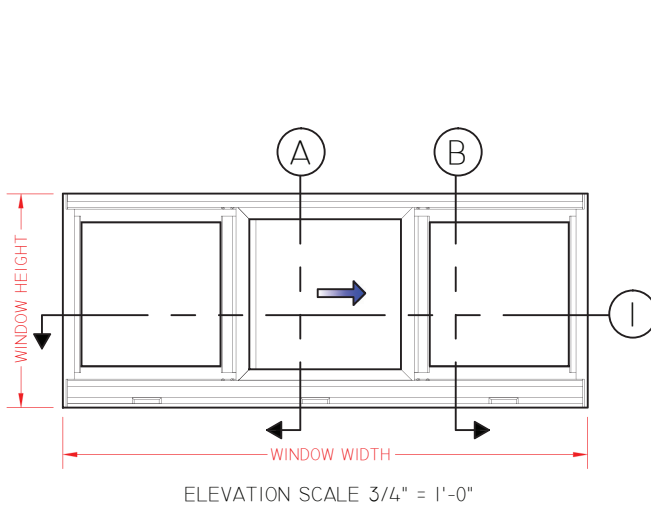
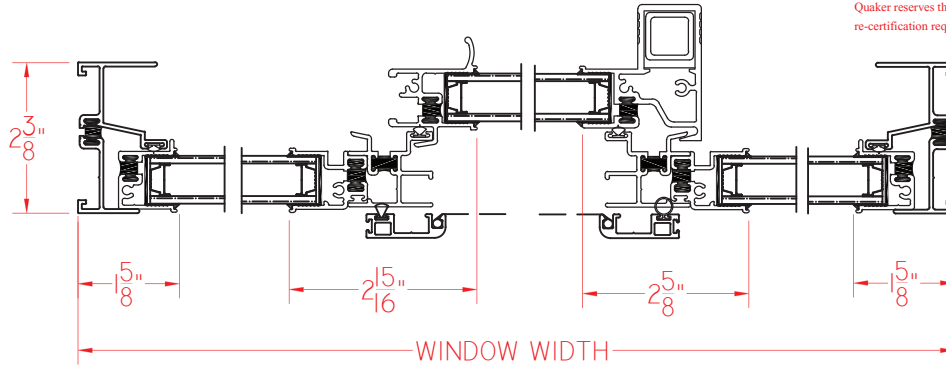
**QUAKER**  
COMMERCIAL WINDOWS AND DOORS



Keystone **K200 Series**  
SERIES **CW-PG40**  
**2 3/8" Frame Depth**  
**Horizontal Slider**

# K200 CENTER VENT SLIDER

This document contains confidential and proprietary information intended for the private use of Quaker.  
© 2016 Quaker Window Products Co., INC. All rights reserved.  
Quaker reserves the right to change any/all designs without notice. Due to periodic re-certification requirements, result shown may vary.



K200 HORIZONTAL CENTER VENT SLIDER 02.04.2015 VERSION 1.0

SCALE 1:3

Our products are tested to the standards of and certified by the American Architectural Manufacturer's Association, the National Fenestration Rating Council and the Window & Door Manufacturers Association.



**QUAKER**  
COMMERCIAL WINDOWS AND DOORS

