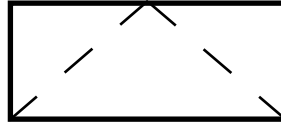




QUAKER
COMMERCIAL WINDOWS AND DOORS



**M600 Series
AW-PG70
3 1/4" Frame Depth
Awning (Project-Out)**

M600 SERIES AWNING (PROJECT-OUT)

The Quaker M600 Series Awning window is ideal for a variety of applications including - Multi-Family, Hotel, Healthcare, Education, Office and Assisted Living.

FEATURES

- ◇ **Commercial Framing System**
 - 3 1/4" main frame
 - Sealable corner keys
 - Crimp/Screw connections
 - 0.094" wall thickness of interior and exterior walls, 0.070" wall thickness elsewhere
- ◇ **Enhanced Design**
 - Azo-braided channel receives Azon pour and debridge thermal break which is 1/2" wide in all main frame and vent rail extrusions
 - Clean squared edges
 - 3" narrow sitelines
- ◇ **Integral Nailing Fin**
- ◇ **Glazing**
 - 1" insulated glass
- ◇ **Hardware**
 - Heavy-commercial Truth Contour™ locking system (Crank-out only)
 - Low profile cam handle (Push-out only)
 - Crank-out available (4-Bar hinges or butt hinges)
 - Push-out available (4-Bar hinges)
- ◇ **Screen**
 - Wicket screen (Push-out only)
 - Standard screens (Crank-out only)
- ◇ **Meets ADA Requirements (ADA Handle Required, Crank-out only)**

OPTIONS

- ◇ **Available Configurations**
 - Project-out awning
 - Push-out or Crank-out
 - Wire frame capabilities
- ◇ **Muntin Choices**
 - Internal or simulated divided lites available
- ◇ **Limited travel hardware**
- ◇ **Glazing**
 - Capillary tubes
 - Argon gas
 - Wide variety of glazing, tinting and thickness options
- ◇ **Panning & Trim Choices**
 - Wide variety of panning, receptor and trim available
- ◇ **Mulling**
 - Wide variety of structural mulls

BENEFITS

- ◇ The capacity to match exterior colors for unique project facades
- ◇ The ability to facilitate large sizes for taller and wider window openings
- ◇ Modern appearance merged with superior structural integrity



PERFORMANCE

- ◇ Structural & Thermal

Model	Awning (Project-Out)
AAMA/WDMA/CSA 101/I.S.2/A440-08 Rating	AW-PG70-AP
Structural Load P.S.F.	70.18
Air at 50 MPH (cfm/ft ²)	0.06
Water (No Penetration) P.S.F.	12.11
CR (Condensation Resistance)	42-49
U-Value	0.39-0.43
SHGC	0.19-0.29

Window test size: 48" x 72"

Operating Force: 6 lbf (maintain motion), 8 lbf (latches), 3 lbf (ADA Handle)

Thermal values shown are a range based on Quaker's most popular glass package options. Other available glass options may result in scores outside of the range shown.

Our products are tested to the standards of and certified by the American Architectural Manufacturer's Association, the National Fenestration Rating Council and the Window & Door Manufacturers Association.

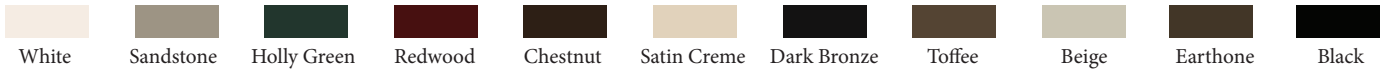


QUAKER
COMMERCIAL WINDOWS AND DOORS

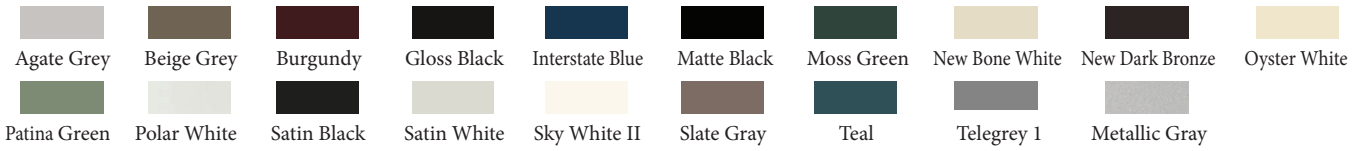
ARCHITECTURAL PAINT COATINGS AND FINISHES

◇ Baked on powder coat finish meets ANSA/AAMA 2604 specs and is available in unlimited colors

- 11 Popular Colors



- 19 Impressive Colors



- 7 Resemble Colors (painted finish resembling anodized)



- Unlimited Custom Colors

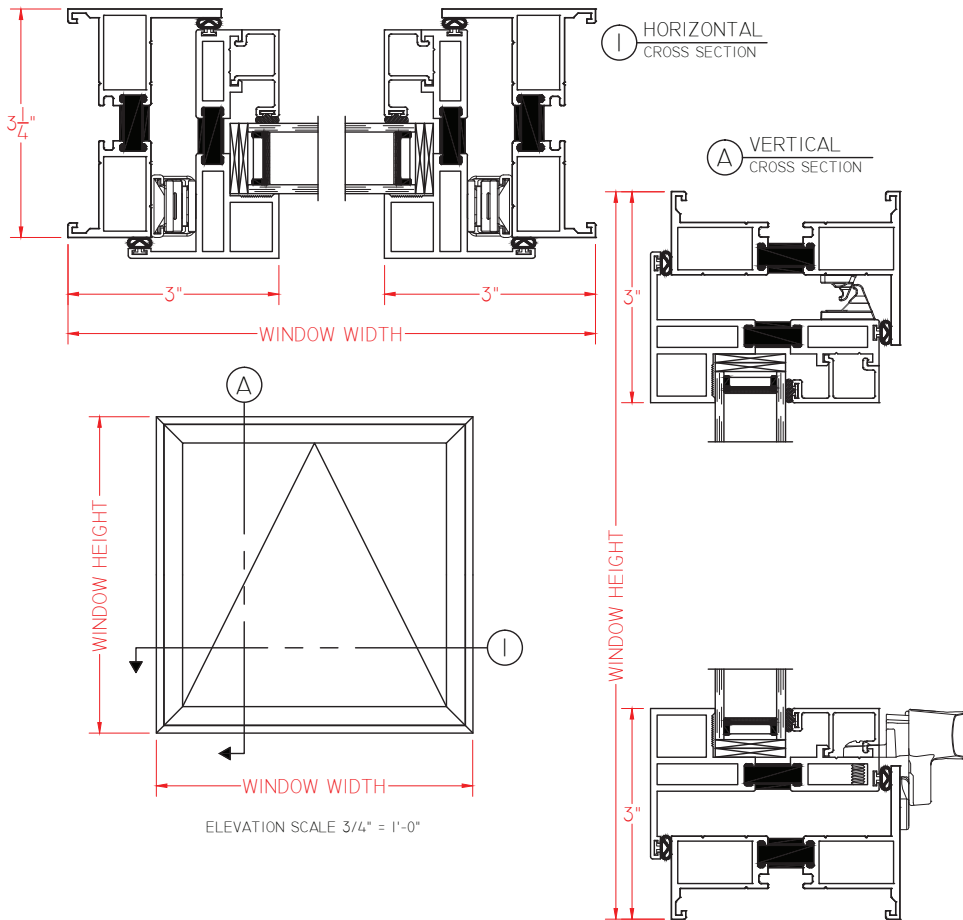
* Printed colors shown here may not accurately depict actual painted colors. Color samples are available upon request.

◇ ANSA/AAMA 2605 powder coat finishes

◇ AAMA 611-98 Class I clear and tinted anodized finishes

M600 Awning (Push-Out) Cross Section

This document contains confidential and proprietary information intended for the private use of Quaker.
© 2016 Quaker Window Products Co., INC. All rights reserved.
Quaker reserves the right to change any/all designs without notice. Due to periodic re-certification requirements, result shown may vary.



SCALE 1:2

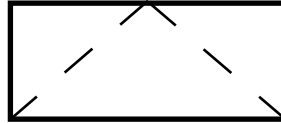
Our products are tested to the standards of and certified by the American Architectural Manufacturer's Association, the National Fenestration Rating Council and the Window & Door Manufacturers Association.



QUAKER
COMMERCIAL WINDOWS AND DOORS



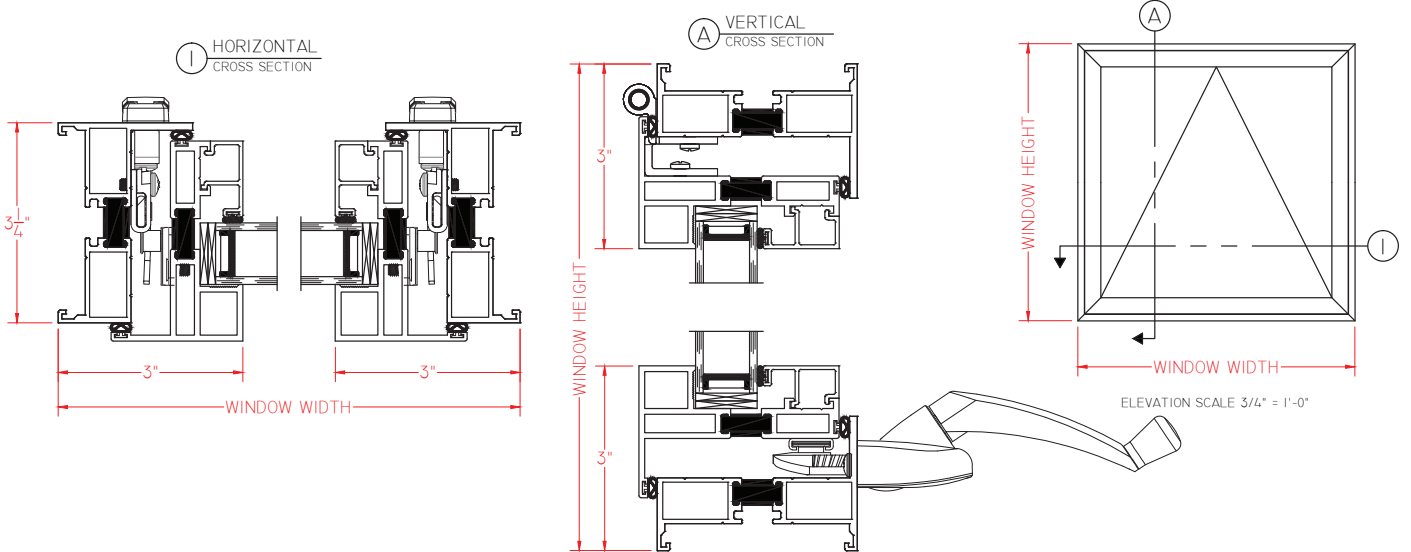
QUAKER
COMMERCIAL WINDOWS AND DOORS



**M600 Series
AW-PG70
3 1/4" Frame Depth
Awning (Project-Out)**

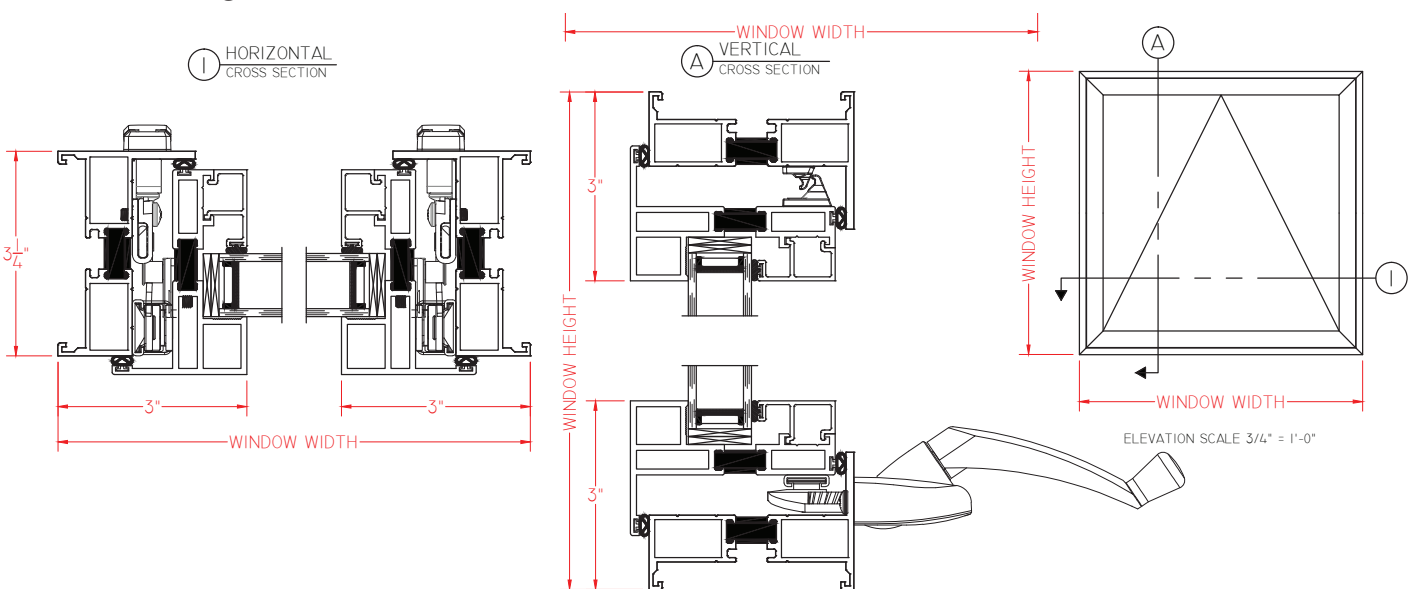
M600 SERIES AWNING (PROJECT-OUT)

M600 Awning (Crank-Out)



SCALE 1:2

M600 Awning (Crank-Out w/4-bar hardware)



SCALE 1:2

Our products are tested to the standards of and certified by the American Architectural Manufacturer's Association, the National Fenestration Rating Council and the Window & Door Manufacturers Association.



QUAKER
COMMERCIAL WINDOWS AND DOORS