



**M600**  
**AW-70 / AW-50**  
**4 1/2" Frame Depth**  
**Hinged Entry Door**

# M600 SERIES HINGED TERRACE DOOR

The M600 Series Hinged Terrace door is ideal for a variety of applications including - Institutions, Education, Apartments and Assisted Living.

## FEATURES

- ◇ **Commercial Framing System**
  - 4 1/2' main frame
  - Extruded wall thickness of 0.125" for all outside walls
  - Extruded wall thickness of 0.070" for all inside walls
- ◇ **Thermally Enhanced Design**
  - Heavy-duty corner keys internally sealed to eliminate sag.
- ◇ **Integral Nailing Fin**
- ◇ **Glazing**
  - Glazing pocket can accommodate up from 1/4" single glaze to 1" insulated glass
- ◇ **Hardware**
  - Adjustable hinges
  - 2-way adjustable hinge (optional 3-way available)
  - 5-point locking system for added security
  - Stylish handle sets add modern touch

## OPTIONS

- ◇ **Available Configurations**
  - Single Panel or Double Panel
  - Inswing or Outswing
  - Matching transoms and sidelites
  - Standard or custom sizing
- ◇ **Muntin Choices**
  - Internal or simulated divided lites available
- ◇ **Hardware**
  - ADA Sill (Outswing only)
  - 10" bottom rail
  - Surface mounted closure
- ◇ **Glazing**
  - Up to 1 3/8" thickness of I.G. available
  - Variety of Energy-Efficient glass packages
  - Impact Glazing
  - Sound attenuation glazing packages for STC/OITC
- ◇ **Panning & Trim Choices**
  - Structural mullions
  - Wide variety of panning, receptor and trim available

## BENEFITS

- ◇ The capacity to match exterior colors for unique project facades
- ◇ Get the view that's best for your application with stile widths range that from Narrow to Medium

## PERFORMANCE

- ◇ Structural & Thermal (test reports or thermal simulations available upon request)

Model	M600 Terrace Door			
	Single Panel Outswing	Dual Panel	Single Panel Inswing	Dual Panel
AAMA/WDMA/CSA 101/I.S.2/A440-08 Rating	AW-70		AW-50	
Structural Load P.S.F.	105			
Air at 50 MPH (cfm/ft <sup>2</sup> )	<0.01			
Water (No Penetration) P.S.F.	12.00			
U-Value (with standard glass pane thickness and various Low-E packages)	0.35-0.39			
SHGC (with standard glass pane thickness and various Low-E packages)	0.19-0.28			
Door test size	48" x 96"		48" x 96"	

Performance numbers and AAMA Grade ratings shown are projected. Certification is in progress.

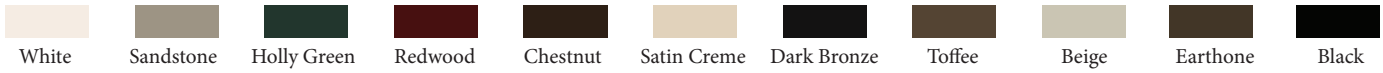
Our products are tested to the standards of and certified by the American Architectural Manufacturer's Association, the National Fenestration Rating Council and the Window & Door Manufacturers Association.



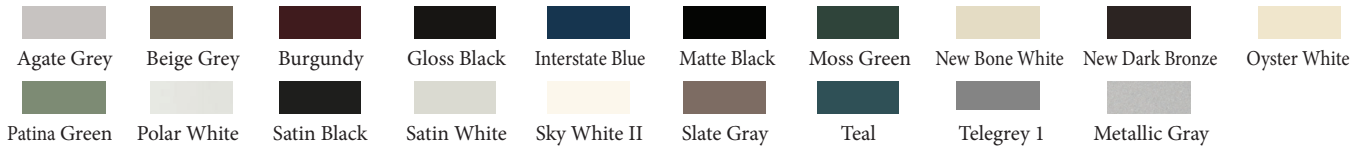
# ARCHITECTURAL PAINT COATINGS AND FINISHES

◇ Baked on powder coat finish meets ANSA/AAMA 2604 specs and is available in unlimited colors

- 11 Popular Colors



- 19 Impressive Colors



- 7 Resemble Colors (painted finish resembling anodized)



- Unlimited Custom Colors

\* Printed colors shown here may not accurately depict actual painted colors. Color samples are available upon request.

◇ ANSA/AAMA 2605 powder coat finishes

◇ AAMA 611-98 Class I clear and tinted anodized finishes

Our products are tested to the standards of and certified by the American Architectural Manufacturer's Association, the National Fenestration Rating Council and the Window & Door Manufacturers Association.



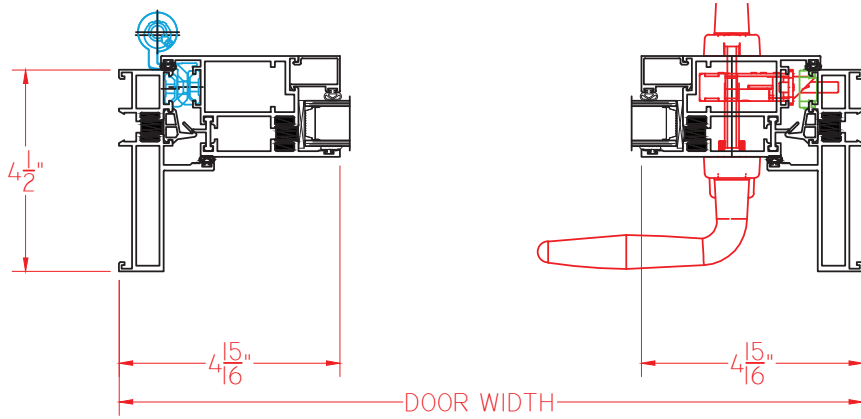
**QUAKER**  
COMMERCIAL WINDOWS AND DOORS



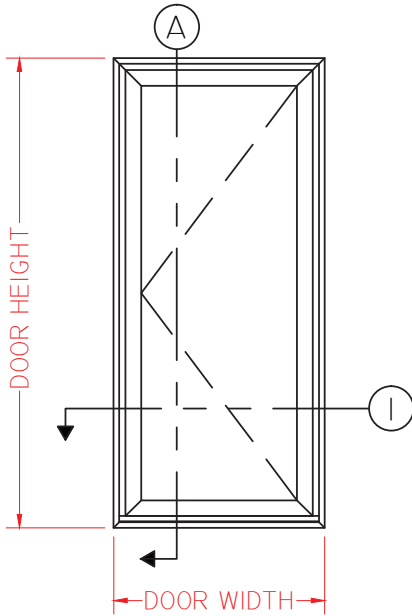
**QUAKER**  
COMMERCIAL WINDOWS AND DOORS

**M600  
AW-50  
4 1/2" Frame Depth  
Hinged Entry Door**

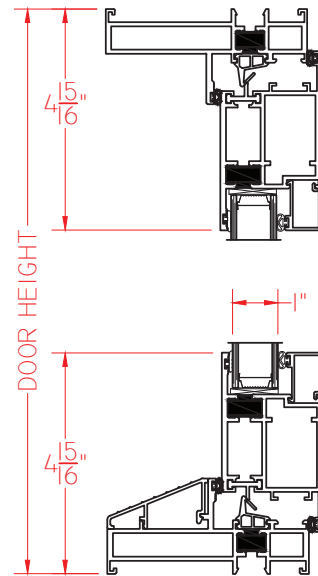
**M600 SERIES HINGED TERRACE DOOR - IN-SWING**



① HORIZONTAL  
CROSS SECTION



ELEVATION SCALE 3/8" = 1'-0"



② VERTICAL  
CROSS SECTION

SCALE 1:4

Our products are tested to the standards of and certified by the American Architectural Manufacturer's Association, the National Fenestration Rating Council and the Window & Door Manufacturers Association.



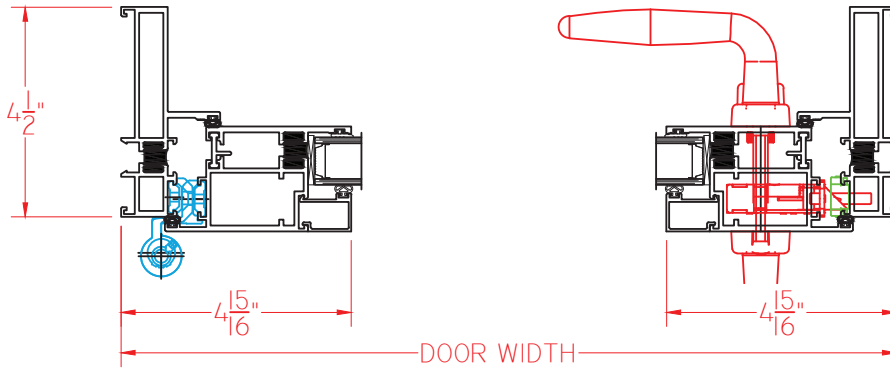
**QUAKER**  
COMMERCIAL WINDOWS AND DOORS



**QUAKER**  
COMMERCIAL WINDOWS AND DOORS

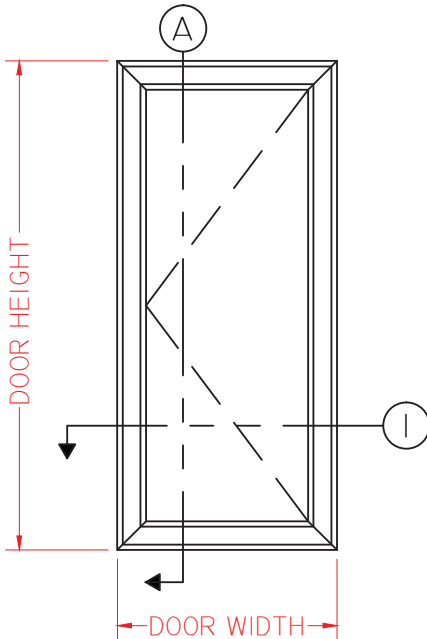
**M600**  
**AW-70**  
**4 1/2" Frame Depth**  
**Hinged Entry Door**

**M600 SERIES HINGED TERRACE DOOR - OUT-SWING**

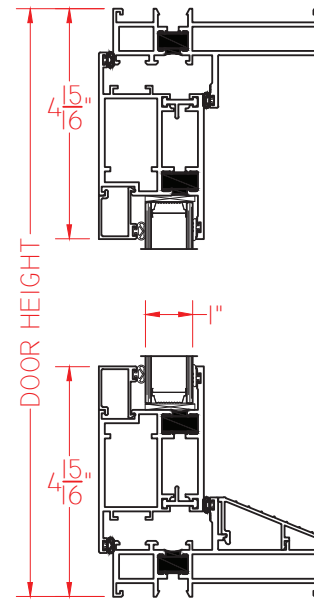


① HORIZONTAL CROSS SECTION

Ⓐ VERTICAL CROSS SECTION



ELEVATION SCALE 3/8" = 1'-0"



SCALE 1:4

Our products are tested to the standards of and certified by the American Architectural Manufacturer's Association, the National Fenestration Rating Council and the Window & Door Manufacturers Association.



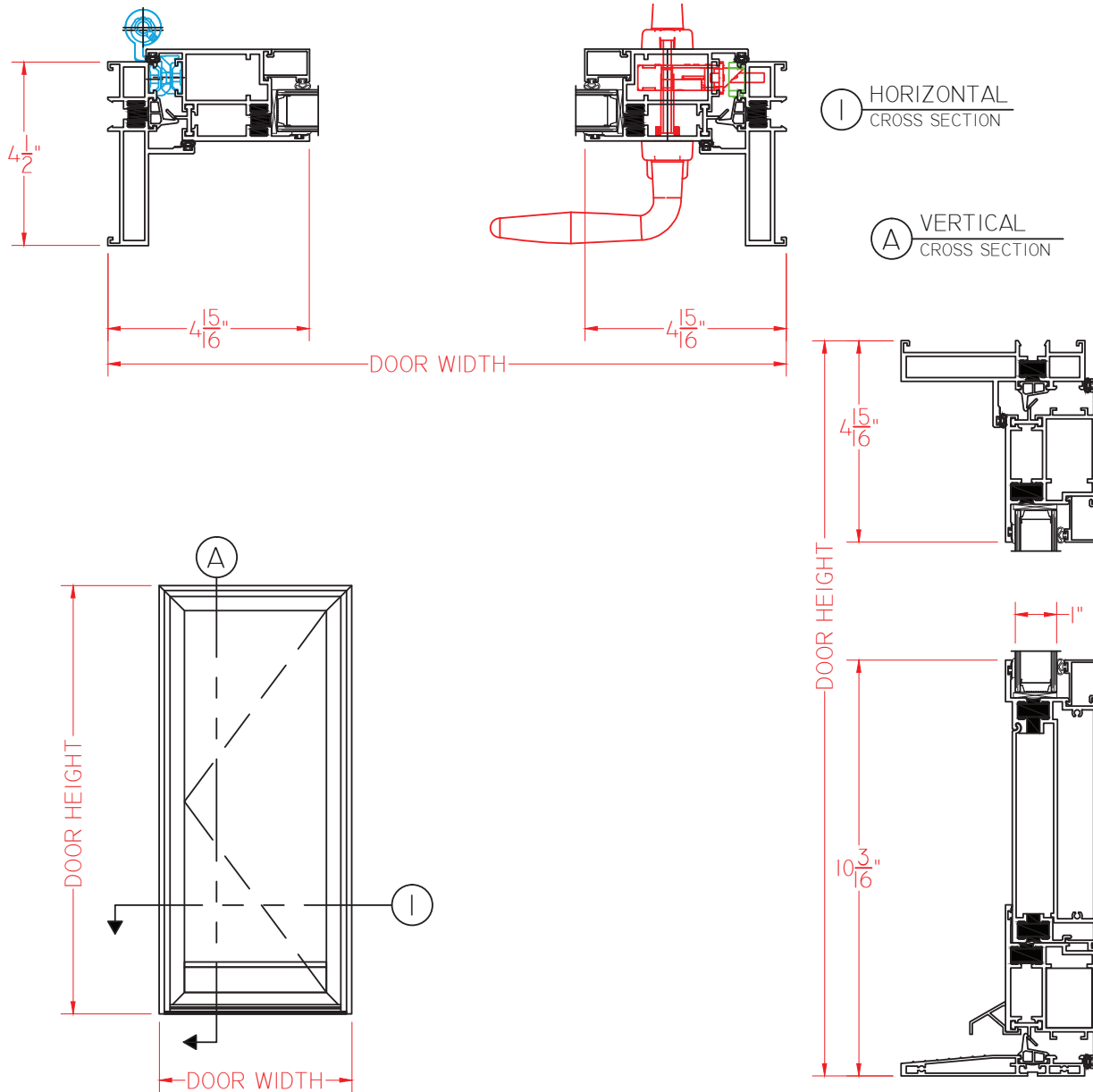
**QUAKER**  
COMMERCIAL WINDOWS AND DOORS



**QUAKER**  
COMMERCIAL WINDOWS AND DOORS

**M600  
AW-50  
4 1/2" Frame Depth  
Hinged Entry Door**

**M600 SERIES HINGED TERRACE DOOR - IN-SWING (ADA)**



ELEVATION SCALE 3/8" = 1'-0"

SCALE 1:4

Our products are tested to the standards of and certified by the American Architectural Manufacturer's Association, the National Fenestration Rating Council and the Window & Door Manufacturers Association.



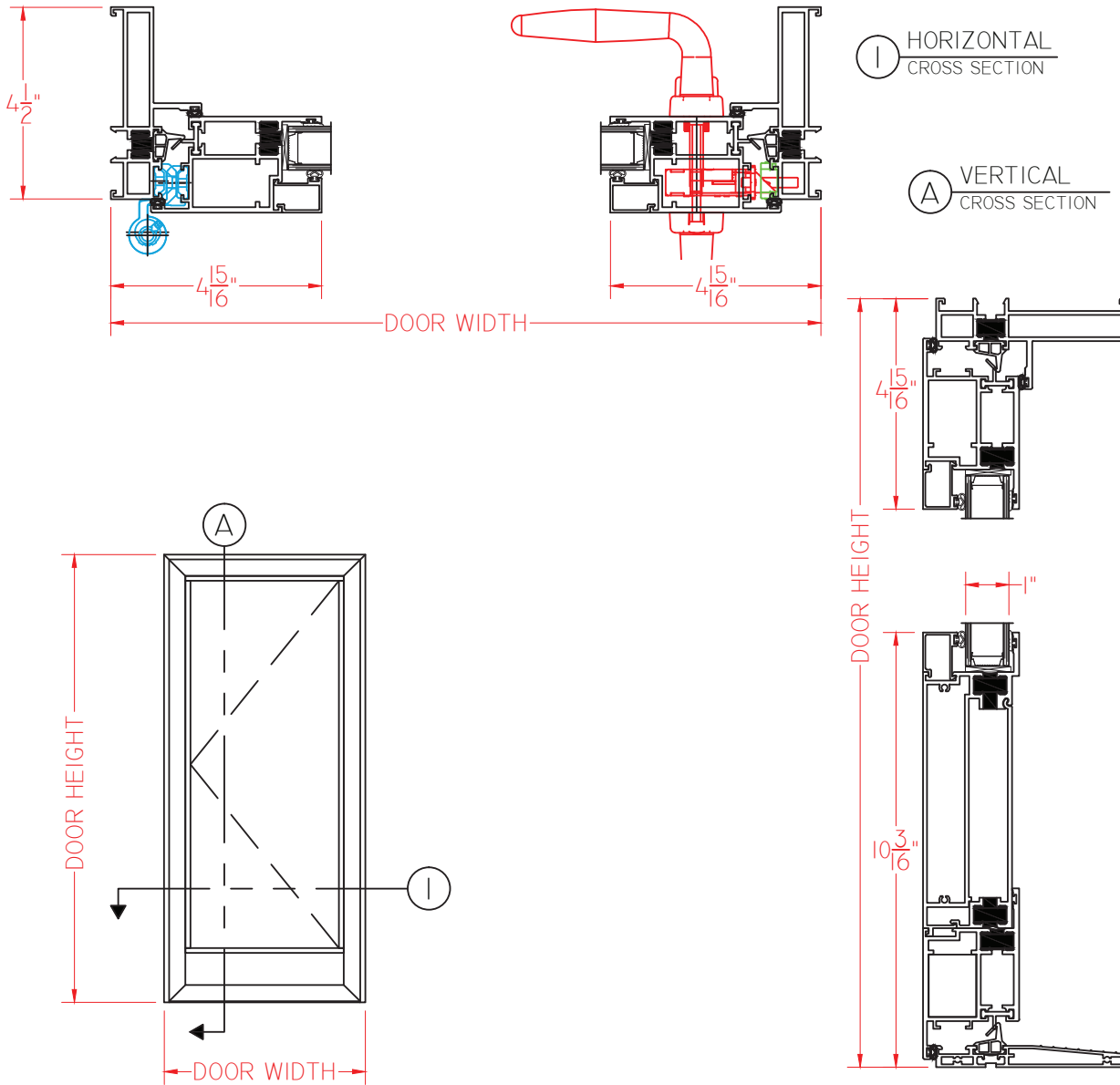
**QUAKER**  
COMMERCIAL WINDOWS AND DOORS



**QUAKER**  
COMMERCIAL WINDOWS AND DOORS

**M600**  
**AW-50**  
**4 1/2" Frame Depth**  
**Hinged Entry Door**

**M600 SERIES HINGED TERRACE DOOR - OUT-SWING (ADA)**



ELEVATION SCALE 3/8" = 1'-0"

SCALE 1:4

Our products are tested to the standards of and certified by the American Architectural Manufacturer's Association, the National Fenestration Rating Council and the Window & Door Manufacturers Association.



**QUAKER**  
COMMERCIAL WINDOWS AND DOORS