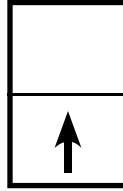




**QUAKER**  
COMMERCIAL WINDOWS AND DOORS



**IMPACT**  
SERIES

**T700 Series  
HC40  
3 1/4" Frame Depth  
Single Hung**

## T700 SERIES SINGLE HUNG

The Quaker Impact T700 Series Single Hung window is specially glazed specifically designed to meet ASTM 1886: ASTM E 1996 for large missile Impact resistance.

### FEATURES

- ◇ **Commercial Framing System**
  - 3 1/4" main frame
  - 0.062" wall thickness of frame and sash
- ◇ **Thermally Enhanced Design**
  - Azon pour and debridge thermal break is 1/2" wide in all main frame and vent rail extrusions
  - Double fin-type weatherstripping
  - Full width lift handles
- ◇ **Glazing**
  - 1" insulated glass
- ◇ **Hardware**
  - Block and tackle balancers
  - Gravity latch
- ◇ **Screen**
  - Extruded aluminum screen frame with BetterVue™ mesh

### BENEFITS

- ◇ The capacity to match exterior colors for unique project facades
- ◇ The ability to facilitate large sizes for taller and wider window openings

### OPTIONS

- ◇ **Available Configurations**
  - Single hung
  - Oriel single hung
- ◇ **Muntin Choices**
  - Internal or simulated divided lites available
- ◇ **Hardware**
  - Class 5 balancers
  - Limited travel latch
- ◇ **Nailing Fin**
- ◇ **Screen**
  - Extruded aluminum screen frame with aluminum wire mesh
  - Extruded aluminum screen frame with sunscreen mesh
  - Extruded aluminum screen frame with stainless steel 0.009" thickness mesh
- ◇ **Glazing**
  - Capillary tubes
  - Argon gas
  - Wide variety of glazing, tinting and thickness options
- ◇ **Panning & Trim Choices**
  - Wide variety of panning, receptor and trim available
- ◇ **Mulling**
  - Wide variety of structural mulls

### PERFORMANCE

- ◇ Structural Performance (test reports or thermal simulations available upon request)

Model	Single Hung
AAMA/WDMA/CSA 101/I.S.2/A440-08 Rating	HC40
Structural Load P.S.F.	60
Air at 50 MPH (cfm/ft <sup>2</sup> )	0.03
Water (No Penetration) P.S.F.	10.03

Window test size: 48" x 90 1/8"  
Operating Force: 19 lbf (maintain motion), 1 lbf (gravity latches)



Our products are tested to the standards of and certified by the American Architectural Manufacturer's Association, the National Fenestration Rating Council and the Window & Door Manufacturers Association.

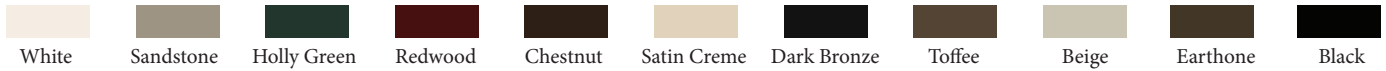


**QUAKER**  
COMMERCIAL WINDOWS AND DOORS

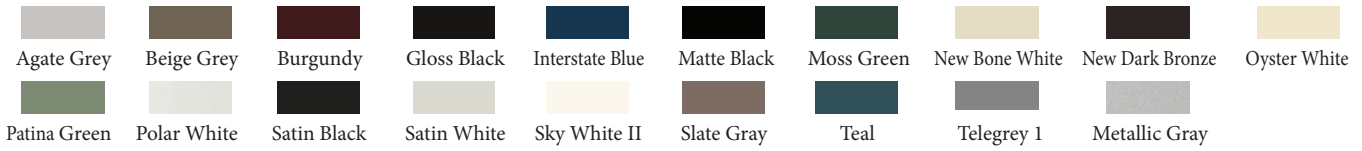
# ARCHITECTURAL PAINT COATINGS AND FINISHES

◇ Baked on powder coat finish meets ANSA/AAMA 2604 specs and is available in unlimited colors

- 11 Popular Colors



- 19 Impressive Colors



- 7 Resemble Colors (painted finish resembling anodized)



- Unlimited Custom Colors

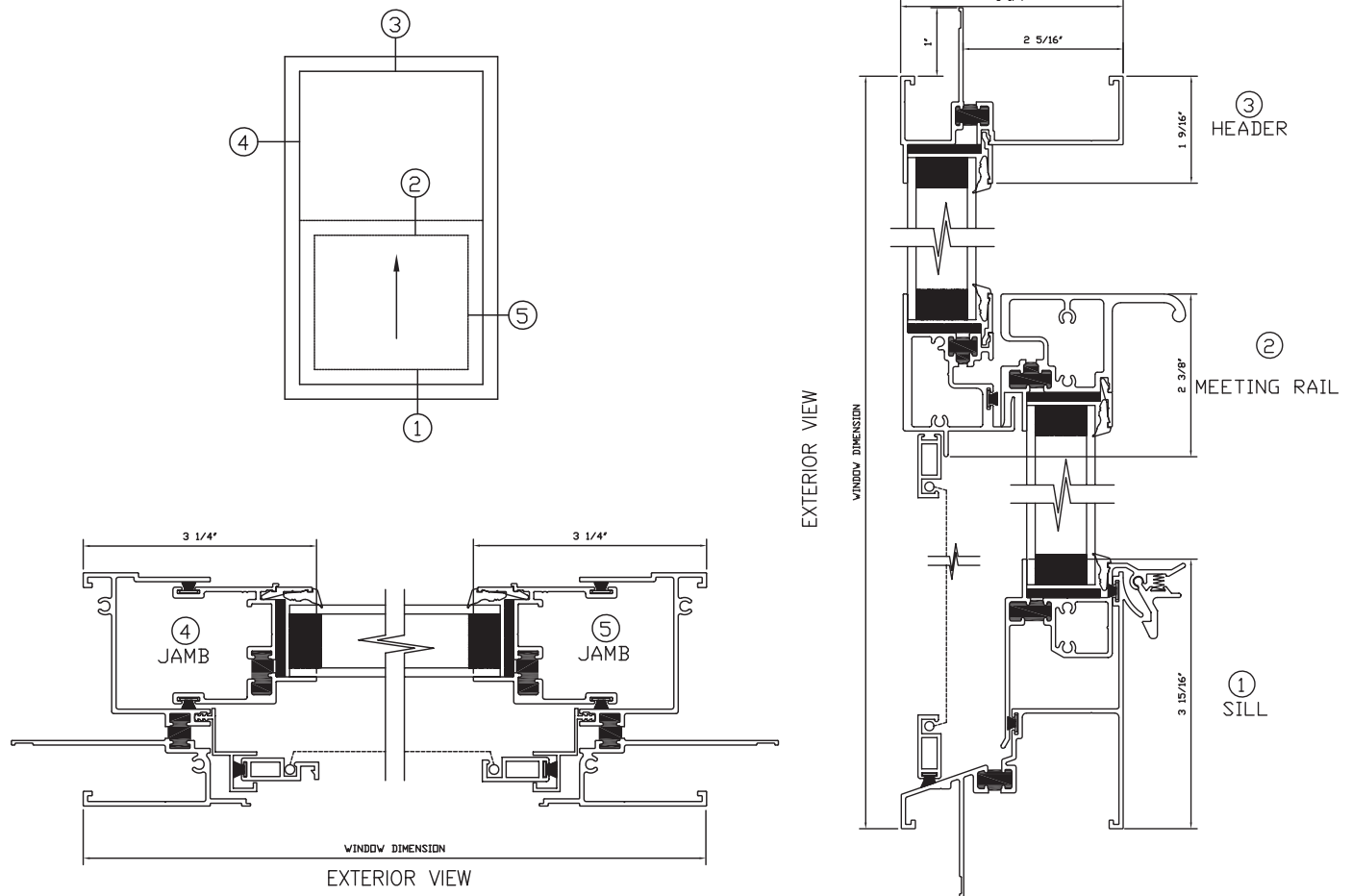
\* Printed colors shown here may not accurately depict actual painted colors. Color samples are available upon request.

◇ ANSA/AAMA 2605 powder coat finishes

◇ AAMA 611-98 Class I clear and tinted anodized finishes

## T700 Single Hung

This document contains confidential and proprietary information intended for the private use of Quaker.  
 © 2016 Quaker Window Products Co., INC. All rights reserved.  
 Quaker reserves the right to change any/all designs without notice. Due to periodic re-certification requirements, result shown may vary.



Our products are tested to the standards of and certified by the American Architectural Manufacturer's Association, the National Fenestration Rating Council and the Window & Door Manufacturers Association.

