

ARCHITECTURAL

WINDOW AND DOOR SERIES



QUAKER
COMMERCIAL WINDOWS AND DOORS



SATISFYING YOUR VISION

For nearly 70 years, Quaker Windows and Doors has been meeting the architectural design needs of our commercial and residential customers. As a national manufacturer of Aluminum, Wood and Vinyl Windows and Doors for the

Architectural, Commercial and Residential markets, our goal is to provide innovative solutions, superior service and architectural engineering options for every project. Quaker's dedication to providing the best products

in the industry has resulted in Product and System Design Innovations, Green Enrichment Principles, Valued Added Benefits, a Mission of Continuous Improvement, Integrity in all processes and a Commitment to Satisfying Your Vision, Your Way.

The Blake at Flowood
Flowood, Mississippi
Architect: Young, Wier, + Boerner Architecture,
PLLC Joint Venture
Dealer: Capital Glass Company





THE FOUNDRY AT 41ST STREET

Pittsburgh, Pennsylvania

The Project: One of the largest redevelopment projects in the greater Pittsburgh area of Lawrenceville. The \$35 million project near the Allegheny River on the site of the former industrial Phoenix Roll Works features a five-story apartment building.

Architectural Opportunity: Building designers wanted a fresh, modern window look with a patio door to match. But looks weren't everything. The windows and doors had to provide enhanced energy efficient performance levels. The project also required a window system that had both operational and non-operational capabilities built into one unit.

Quaker Solution: E600 Series windows from Quaker met all of the requirements. A total of 125 continuous-frame awning over fixed window units with both thermal efficiencies and a contemporary appearance were delivered. As it was a new construction project, an integral fin was included to make installation easier. Nearly 180 E500n Series patio doors were provided that brought a resembling exterior and supplied excellent thermal and structural qualities.

NEW CONSTRUCTION

Each large, complex New Construction project has its own set of distinct challenges. Quaker engineers develop products with innovative design flexibility to adapt to specific field conditions. The goal is to deliver a product that is not only easier to install, but one that contains labor saving features and options.

The Foundry at 41st Street
 Architect: Rothschild Doyno Collaborative
 Dealer: Specified Systems Inc.
 Developers: Fort Willow Developers and Walnut Capital
 Segment: Multi-family





Copyright LRK Inc.

CROSTOWN CONCOURSE

Memphis, Tennessee

National Register of Historic Places

The Project: The Crosstown Concourse, also known as the Sears Crosstown Building or Sears, Roebuck and Company Catalog Distribution Center and Retail Store is an art deco high-rise building built in 1927.

Architectural Opportunity: The Crosstown Building posed some interesting challenges. First, a portion of the windows would be going as high as 14 stories, so they needed to be structurally sound. Secondly, many of the openings were extremely large, some as expansive as 33 square feet. Additionally, the new windows had to replicate the old look in order to receive historic tax credits. Finally, since this was a sizable project it would take additional time to complete. Windows would have to be delivered in timely scheduled phases.

Quaker Solution: More than 3,200 of Quaker's historically correct H600 Series windows were the definitive answer to revitalizing this storied structure. Quaker designed 7 historically-correct dies specifically for the project to help it retrieve its original appearance. In all, nearly 30 phases were shipped over an 18-month period to keep the project on schedule.

HISTORICAL REPLICATION

Quaker's family of Historical products contains the unique features necessary for historical replication projects — symmetrical sightlines, the capacity to match existing colors, the ability to facilitate large sizes and historically accurate panning and trim with accessories such as raised grid profiles and ogee blocks to preserve a building's distinguished appearance.

Crosstown Concourse
 Architect: Looney Ricks Kiss
 Dealer: Pitman Glass
 Developer: Crosstown Arts
 Segment: Historic Mixed Use



Copyright LRK Inc.



NorthShore 770 and Morningside Construction Managers

NORTHSHORE 770

Chicago, Illinois

The Project: NorthShore 770 is a mixed use complex comprised of ultra-luxury residential apartments and more than 100,000 sq. ft. of retail space.

Architectural Opportunity:

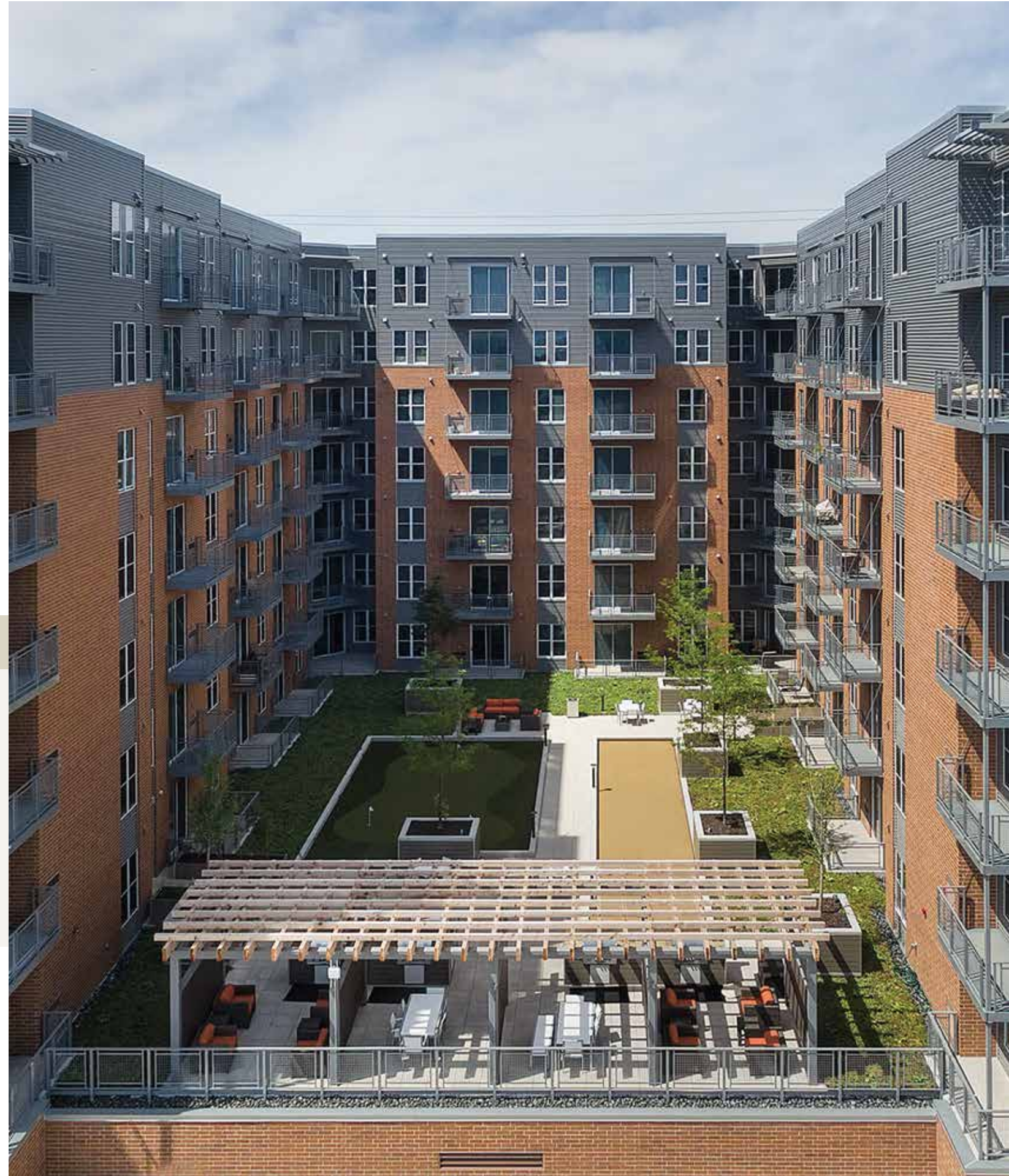
This eclectic, 9-story apartment complex needed contemporary yet practical windows and doors to attract the clientele they desired. The products specified had to be designed for new construction application. The developer and contractor also required delivery phases with extended construction time expected.

Quaker Solution: Quaker provided more than 1,300 of our K200 Series Single Hung windows with some mullied in-house to produce combination units, thus saving money and time for the contractor and developer. Along with windows, 288 aluminum sliding patio doors, some as tall as 9', were shipped to accommodate NorthShore 770's modern, wide-open design. Products were shipped in 3 phases to adhere to the project's schedule.

ENERGY EFFICIENT ALUMINUM

In the past, designers and builders had to continually compromise thermal performance for the structural integrity that aluminum provided. Advancements in design and energy technology changed the thermal values for aluminum products. Quaker innovative aluminum product designs provide exceptional U and SHGC values, along with strength and durability.

NorthShore 770
 Architects: HKM Architects + Planners, Inc.
 Dealer: Chain O Lakes Lumber Company
 Contractor: MorningsideUSA
 Segment: Mixed Use Multi-Family



NorthShore 770 and Morningside Construction Managers



JACKSON CROSSING

Alexandria, Virginia

The Project: Jackson Crossing is a new construction five-story, 78-unit affordable apartment complex.

Architectural Opportunity: All windows specified had to meet the requirements set by the Virginia Housing & Development Agency (VHDA). That included specific thermal and structural performance levels as well as, definitive labeling prerequisites.

Quaker Solution: More than 1,000 of Quaker Brighton Series casement and fixed wood windows were provided. All products met the U-Value and Solar Heat Gain requirements. The windows also satisfied the STC and Design Pressure stipulated. Additionally, custom features were provided including a special Telegray exterior color. AAMA and Energy Star stickers were provided in full view to satisfy VHDA regulations. Quaker easily complied with all specifications.

THE QUALITY OF WOOD

Since wood windows and doors are subjected to the severe challenges of the elements, Quaker has designed protective barriers for both the interior and exterior of the unit. On the interior, the wood is specially treated in advance to maximize the protection against water, mold and mildew. On the exterior, extruded aluminum cladding is the preeminent safety guard against the challenges of Mother Nature. All Quaker wood products adhere to the strict industry standards of the Window and Door Manufacturer's Association, which ensure long-lasting performance.

Jackson Crossing
 Architect: Bonstra | Haresign Architects
 Contractor: Harkins Builders
 Segment: Multi-Family





UNIVERSITY OF KENTUCKY

Lexington, Kentucky

Woodland Glen I, III, IV, and V, Limestone Residents, University Flats, Lewis Hall, Hagin Hall



The Project: The student housing project was designed to enlarge and modernize the student living experience at the University of Kentucky.

Architectural Opportunity: The scope of such a large project including budgetary constraints and a desire to achieve LEED certification led developers to consider vinyl products. However, compromising structural integrity by using vinyl was a concern that had to be addressed. Sound reduction and student safety were also primary requirements. Multiple buildings meant multi-phase deliveries.

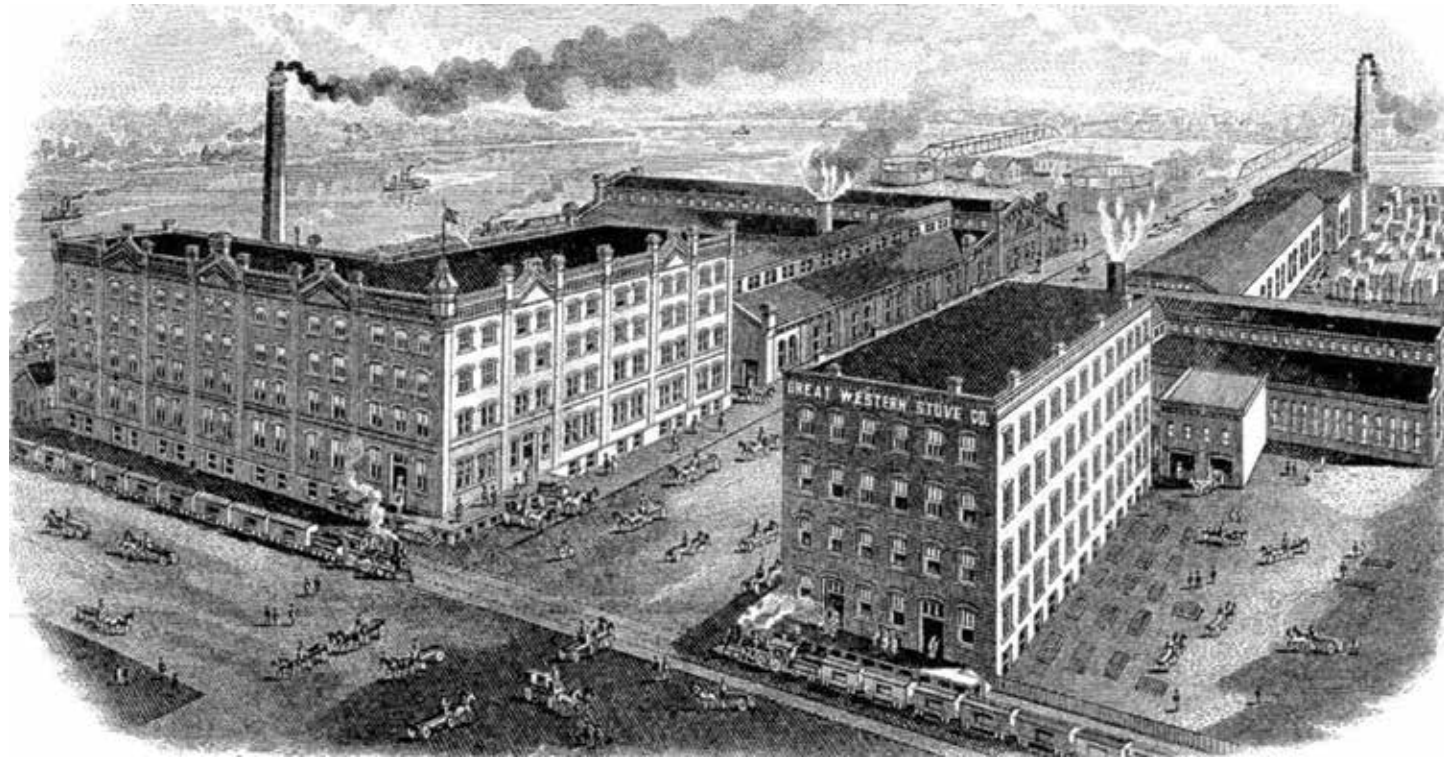
Quaker Solution: Value engineering led developers to choose Quaker's commercially-rated vinyl windows. Single windows and multiple-units, ganged with reinforced mullions easily met all of the structural specifications, including wind-load calculations for 5-story buildings. The selected glazing package included special Low-E for greater energy-efficiency, thicker panes of glass for reduced sound transmission and tempered glass for enhanced safety. Security clips and limited travel devices were also included for additional safety. Nearly 300 twin single hung units were delivered in the first phase with the remaining products delivered as scheduled.

THE VALUE OF VINYL

Quaker commercial vinyl windows offer a strong material alternative for light commercial projects including but not limited to — Educational dorms, Assisted Living Centers and Multi-family units. Quaker's commercially-engineered vinyl clad products allow for larger and taller windows that can confidently be used in structures as tall as 7 stories high. Structural mullions make it possible for multi-unit combinations that will not compromise performance or durability.

University of Kentucky
 Architect: Sherman Carter Barnhart
 Dealer: Kidd Glass Inc.
 Segment: Education/Housing





STOVE FACTORY LOFTS

Leavenworth, Kansas
National Historic Registry

The Project: The Great Western Stove Company 6-building complex was built between 1874 and 1910 along the Missouri River in downtown Leavenworth.

Architectural Opportunity: The project specified a unique triple-hung model window. This, along with historically-correct sightlines, were needed to meet National Park Service specifications, thus allowing the developers to gain the classical look and claim both state and federal tax credits.

Quaker Solution: The Quaker engineering and manufacturing teams developed a custom window for the Stove Factory Loft project — the H500 Triple Hung Series. The Developers were extremely satisfied and the historical overseers easily approved the design. More than 265 of the custom triple hung units, along with dozens of other hung and fixed H-Series products were supplied.

DESIGN CONSISTENCY

Quaker products offer both visual and functional long-term design consistency. Quaker's design consistency is the result of nearly 70 years of manufacturing experience utilizing the industry's latest technology and the commitment of a qualified team whose goal is to satisfy every customer's vision.

Stove Factory Lofts
 Architect: Exact Architects
 Dealer: Great American Building Materials
 Developer: Foutch Brothers
 Segment: Historic Multi-family





HOTEL INDIGO

Tuscaloosa, Alabama

The Project: The Hotel Indigo Tuscaloosa Downtown is an upscale boutique hotel in the heart of this classic southern city.

Architectural Opportunity: One of the country's newest hotel chains required posh elegance to its exterior and interior appearance. Designers asked for huge glass elements, necessary to fit their building's modernistic design. The hotel's location also dictated that sound transmission levels be minimized since it was being built amid a bustling downtown. A third requirement was that the glass must afford specific comfort levels for the Deep South.

Quaker Solution: Quaker's E300 fixed windows were the perfect product for this project. The overall design of the window blended well with the polished motif. A custom Low-E glazing package was developed to attain the ideal comfort levels, and when used with our E300 window, it provided guests an extra, intangible amenity. Tempered, 1/4" glass was included for added safety and sound reduction. The multiple window units were all factory-mulled into double and triple units measuring 94" and 112-1/2" tall, which allowed the project to progress on schedule.

SATISFYING PROJECT REQUIREMENTS

Quaker has extensive experience across the country in the Hotel sector.

We are able to satisfy this industry segment by meeting unique and stringent requirements including — single-frame systems containing HVAC louvers or multiple window units, specific franchise stipulations, integrated safety features, sound reduction, strict deadlines and phased delivery schedules.

Hotel Indigo
 Architect: Reese Vanderbilt & Associates
 Dealer: Sunbelt Glass LLC
 Contractor: Harrison Construction. N. Port
 Owner: Chance Partners
 Segment: Hotel



QUAKER CAPABILITIES AND SERVICES

Designed for Innovative Solutions

Quaker offers a full range of services to satisfy your vision — your way. We have an experienced team who are strongly committed to providing creative and practical solutions to the most difficult challenges unique to a project. We offer the highest quality product designs and services within technical and budget constraints to satisfy and fulfill your project goals.

Research

Quaker Research objectives are to identify the latest product and manufacturing technologies, market trends, future code requirements and product features that are required and desired by the key influencers and various market segments.

Design and Engineering Services

Our Design and Engineering team collaborates closely with our customers and the Quaker team to focus on project necessities. This allows quick and seamless modifications and enhancements as well as the highest quality design solutions for your project.

Project Support Team

Our Project Support Team helps to drive all aspects of a project from planning and implementation to meeting the successful objectives in an efficient and cost effective manner.

Architectural Coatings

Quaker's in-house, state-of-the-art paint facilities afford us total control of the painting application process and have made us an industry leader when it comes to paint finishes.

For our aluminum and wood clad windows and doors, powder-coat paint is baked on for longer-lasting effectiveness in both AAMA 2604 and 2605 finishes.

From the purest white to the darkest black and everything in between...literally any color in the rainbow is at your fingertips with our custom color capabilities.

Quaker even offers a substitute for the traditional anodized finish. Our 7 "Resembles" Colors — powder coat finishes are made to resemble an anodized appearance. Along with the spot on match, you also get a better warranty, better price, better lead time and a consistent look on every rail.

For the optional painted exterior on our vinyl products, a water-based, heat-reflective paint which meets AAMA 615 standards, is formulated for high-performance. There are 11 "Quick Pick" colors along with the option of any custom color.



Automated Manufacturing

Quaker continually pursues advances in technologies and utilizes automated systems to improve quality, productivity and efficiencies. Because of an extensive product family, these new generation innovations are found throughout our manufacturing facilities, giving us a strong competitive advantage

Testing to High Standards

Our windows and doors are independently tested to meet the highest industry standards. Yet our commitment to quality doesn't stop there. We also test products throughout each production day in our own accredited test labs to confirm that they are performing up to the high expectations we have set.



LEED® and GREEN

Two words that have revolutionized the building industry and changed the way architects, designers and developers think are LEED and GREEN.

At Quaker, we've been offering positive, environmental products for many years, so the Green concept is simply second nature to us.

We have the products to help your project achieve the coveted Leadership in Energy and Environmental Design (LEED) status. Our aluminum and glass contain a significant amount of recycled materials. On all of our aluminum windows, doors and components, Quaker employs only powder-coat paint which emits nearly zero Volatile Organic Compounds (VOCs) into the air. Enhanced glass packages are offered with all of our windows and doors. These glazing systems are versatile and efficient — sunlight and solar heat can be deflected or captured depending upon what's required.



ARCHITECTURAL ENGINEERING OPTIONS

Whatever your next project entails Quaker has the window and door solution for you and your client. Anything from a contemporary storefront appearance (new M600 Series) to an historic replica (H-Series family) is right at your fingertips.

Quaker offers a full line of architectural-engineered alternatives depending on your project, schedule and budget requirements. Quaker's extensive line of aluminum, wood clad and vinyl products provide the design flexibility that you desire without compromising the performance levels and aesthetics you require.



There is a distinct quality, financial and design advantage in selecting a one source manufacturer that can provide superior windows and doors in all three different types of product materials — aluminum, wood and vinyl. That's why Quaker is the solution for any project type.



The Strength and Design Flexibility of ALUMINUM

Aluminum windows and doors are the customary choice when designing commercial construction projects.

Quaker's aluminum window and door offering is the most extensive and versatile in the market today.

Crank out, Push Out, Pull-In, Single Hung, Double Hung, Horizontal Slider... Quaker has windows that fit whatever operational mode is needed for your project. There is also a full line of compatible fixed windows in our portfolio.

Additionally, Quaker has hinged, sliding, telescoping and bi-folding doors to satisfy your requirements.

Multi-window units can easily be factory-mulled for ease of installation. Furthermore, several of Quaker's aluminum window series offer the choice of multiple units in one continuous master frame. In both cases, this immediately adds value with less costly field labor.

Quaker Windows and doors are tested to the most stringent industry standards, assuring superior performance and durability. AAMA test ratings for Quaker's aluminum products range from CW-40 to AW-80 to satisfy any project application.

For coastal areas, Quaker has a variety of fully-tested, impact-rated products to withstand the most volatile weather.

Quaker's Aluminum windows and doors are designed with thick aluminum walls, as much as 1/8" thick in some cases, for supreme strength.

Proper corner joinery construction is essential for two reasons — ensuring a window's stability and maintaining a water-tight seam. Our aluminum windows and doors do both. Manufacturing techniques specially created by Quaker lend assurance that each product has a completely square frame with impermeable corners. The bonus is aesthetically pleasing windows with no unsightly cracks or breaches.

Our Aluminum Architectural products are unparalleled in the industry when you combine Quaker's innovative design, advancements in energy efficiency, structural integrity and durability.



The Value of Quaker Commercial VINYL

Why vinyl? Because of the overall value they bring to a project, Quaker's architectural vinyl windows and doors are a viable solution for all light commercial applications and have been for more than a decade.

New construction vinyl. Check. Replacement vinyl. Check. CW- or LC-rated vinyl. Check. Modern or traditional design. Check. Quaker vinyl products have a wide range of options regardless of your project application.

Our vinyl portfolio contains hung, venting, sliding and fixed models covering the entire gamut of project requirements. A sliding patio door is also available in Quaker's vinyl catalog.

Solid structural qualities make Quaker's commercial vinyl products the superior choice. Quaker utilizes vinyl that is up to 20% thicker than many other vinyl window brands to ensure that it will hold its shape better and stand up extraordinarily well to harsh elements.

Reinforced mulling options allow you to combine our vinyl window units and use them in structures as tall as 7 stories high, while still maintaining structural stability and performance levels.

The independent testing results of Quaker Commercial Vinyl Windows and Doors are a testament to their innovative design. Our products are not only tested to a standard gateway size, but are also tested to the designed maximum size and weight. Quaker product design yields high design pressure ratings which range from 35 to 50.

Quaker commercial vinyl windows are also available that have been impact tested and rated for high wind areas.

Both integral nailing flange and sub sill options are available, as well as a variety of interior and exterior trim packages to enhance project flexibility. Excellent thermal performance, low maintenance, exterior paint options including rare colors like black and dark bronze, and cost benefits are all supplemental advantages built into Quaker's vinyl products.



The Beauty and Strength of WOOD

Quaker's wood clad products are ideal for light commercial applications including multi-family/ multi-story structures, schools, luxury lofts, hotels, or other commercial buildings. It starts with wood being structurally solid.

Several models from Quaker's wood window line have a design pressure rating of 50 or higher which meet specific building code requirements. Quaker's wood products are independently tested to meet the highest industry standards. Quaker wood clad windows and doors are engineered with 40% more solid wood than several other brands. The wood emanates a healthy, natural beauty that is preserved by Quaker specially treating the windows and doors to prevent water penetration, mold, mildew and rot. This ensures that not only the product's appearance will be maintained, but that they will continue to perform for years.

Using only AAMA 2604 and 2605 exterior powder coatings, the wood clad windows and doors in your project will resist fading and maintain their color for years to come. The aluminum exterior is extruded, not roll-form. The difference can best be expressed by comparing the thickness of a quarter (extruded aluminum) to an aluminum can (roll-form).

With hung, venting and fixed windows plus sliding, hinged, telescoping and bi-fold doors, Quaker Commercial wood products offer you a variety of design options and multiple configuration possibilities to satisfy your most creative architectural style.

Innovative Quaker engineering provides superior thermal values across the entire line of wood clad commercial products.

QUAKER PRODUCT SELECTION GUIDE

Product Type	Description	Series	Model	Frame Depth	AAMA/WDMA/CSA Designation	IGU Thickness	Test Size	Structural Load PSF	Air @25MPH (cfm/ft)	Water Resistance PSF	Blast	Impact
ALUMINUM												
Hung	Single Hung	Emerge	E200	2-3/8"	C-50	3/4"	56" x 91"	75.19	0.05 @ 50 MPH	7.52		
	Single Hung	Emerge	E300 / E303 / E500	3-1/4"	CW-50 / CW-50 / AW-40	1"	56" x 91" / 60" x 99"	75.19 / 60.15	0.05 @ 50 MPH / 0.25	7.52 / 8.15		
	Single Hung	Historical	H300 / H500	3-1/4"	HC-40 / AW-50	5/8"	60" x 99"	60.15 / 75.19	0.20 / 0.17	12.11 / 10.03		
	Single Hung	Historical	H503	3-1/4"		5/8"						
	Single Hung	Keystone	K200	2-3/8"	C-50	3/4"	54" x 90"	75.00	0.10	7.50		
	Single Hung	Traditional	T300 / T500	3-1/4"	HC-40 / HC-50 / AW-50 / HC-50	1"	60" x 99" / 72" x 72"	60.15 / 75.00 / 75.19 / 75.00	0.01 / 0.03 / 0.01	6.07 / 12.00 / 10.03 / 12.00		
	Single Hung	Traditional	T600	3-1/4"	AW-50 / AW-80	1"	60" x 99" / 60" x 60"	75.19 / 120.30	0.01	12.00		
	Single Hung	Traditional	T700	3-1/4"	AW-50	1"	60" x 99"	50.13	0.03	10.03		•
Double Hung	Single Hung	Blast	B500	3-1/4"	AW-50	1"	60" x 99"	75.19	0.03	10.03		•
	Double Hung	Emerge	E300 / E303 / E500	3-1/4"	CW-50 / CW-50 / AW40	1"	56" x 91" / 56" x 91" / 60" x 99"	75.19 / 75.19 / 60.15	0.05 @ 50 MPH / 0.25	7.52		
Triple Hung	Double Hung	Keystone	K200	2-3/8"	C-50	3/4"	54" x 90"	75.0	0.10	7.50		
	Triple Hung	Historical	H500	5"		5/8"						
Slider	Triple Hung	Historical	H500	5"		5/8"						
	Horizontal	Keystone	K200	2-3/8"	CW-40	3/4"	72" x 60"	60.15	0.08	6.06		
	Horizontal	Emerge	E300 / E303 / E350	3-1/4"	CW-50	1"	72" x 60"	75.19	0.10 / 0.10 / 0.08	7.52 / 7.52 / 10.03		
	Horizontal	Emerge	E500	3-1/4"	AW-50	1"	99" x 74"	75.19	0.09	10.03		
Casement	Horizontal	Emerge	E700	3-1/4"	AW-50	1"	99" x 74"	75.19	0.09	10.03		•
	Crank O/ Push O	Emerge	E600	3-1/4"	AW-70	1"	36" x 60"	105.26	0.01	12.11		
	Project-In	Emerge	E600	3-1/4"	AW-70	1"	36" x 60"	105.26	0.01	12.11		
	Crank O/ Push O	Historical	H600	3-1/4"	AW-50	1"	36" x 60"	75.14	0.07	10.03		
	Crank O/ Push O	Modern	M600	3-1/4"	AW-70	1"	48" x 84"	105.00	0.05	12.00		•
Awning	Crank O/ Push O	Traditional	T600	3-1/4"	AW-70	1"	36" x 60"	105.26	0.01	12.11		
	Project Out	Emerge	E600	3-1/4"	AW-70	1"	60" x 36"	105.26	0.01	12.11		
	Project Out	Historical	H600	3-1/4"	AW-50	1"	60" x 36"	75.19	0.05	10.03		
	Project Out	Modern	M600	3-1/4"	AW-70	1"	60" x 36"	105.00	0.05	12.00		•
	Project Out	Traditional	T600	3-1/4"	AW-70	1"	60" x 36"	105.26	0.001	12.11		
Hopper	Project In	Emerge	E600	3-1/4"	AW-70	1"	60" x 36"	105.26	0.03	12.11		
	Project In	Traditional	T600	3-1/4"	AW-70	1"	60" x 36"	105.26	0.03	12.11		
Fixed	Fixed	Emerge	E200	2-3/8"	HC-60	1"	64" x 71"	90.0	0.01	7.52		
	Fixed	Emerge	E300 / E350 / E500	3-1/4"	AW-50 / AW-50 / CW-70	1"	60" x 99" / 60" x 60"	75.19 / 105.26	0.01	10.00 / 12.11		
	Fixed	Emerge	E600	3-1/4"	AW-50 / CW-80	1"	60" x 99" / 60" x 60"	75.19 / 120.30	0.01	12.11		
	Fixed	Emerge	E700	3-1/4"	CW-70	1"	60" x 60"	105.26	0.01	12.11		•
	Fixed	Historical	H500	3-1/4"	AW-40	5/8"	60" x 99"	60.15	0.01	8.15		
	Fixed	Historical	H600	3-1/4"	AW-50 / AW-80	1"	60" x 99" / 60" x 60"	75.19 / 120.30	0.01	10.03		
	Fixed	Modern	M600	3-1/4"	AW-70	1"	72" x 120"	70.18	0.01	12.11		•
	Fixed	Keystone	K200	2-3/8"	HC-60	1"	64" x 71"	90.23	0.01	7.52		
	Fixed	Keystone	K300 N	3-1/4"	HC-50	1"	72" x 72"	75.00	0.003	7.50		
	Fixed	Traditional	T300 / T500	3-1/4"	HC-50	1"	72" x 72"	75.00	0.01	12.00		
Doors	Fixed	Traditional	T600	3-1/4"	AW-50 / AW-80	1"	60" x 99" / 60" x 60"	75.19 / 120.30	0.01	12.11		
	Entrance		Q213	4-1/2"		1" (or 1/4" single glazed)						
	Sliding	Emerge	E300 N	5"	C-40	1"	95" x 83"	50.15	0.068	6.07		
	Sliding	Emerge	E500 N	5"	HC-40	1"	123" x 95"	60.15	0.16	7.52		
	Terrace Outswing	Modern	M600	5"	AW-70	1"	48" x 96"	105.0	<0.01 @ 50 mph	12.00		•*
	Terrace Inswing	Modern	M600	5"	AW-50	1"	48" x 96"	105.0	<0.01 @ 50 mph	12.00		•*
	Sliding	Modern	M600	5"	AW-50	1"	123" x 95"	75.0	<0.01 @ 50 mph	12.00		•*
ALUMINUM CLAD WOOD												
Hung	Single Hung	Brighton		6"	R-50	3/4"	36" x 84"	75.19	0.04	7.52		
Double Hung	Double Hung	Brighton		6"	R-50	3/4"	36" x 84"	75.19	0.04	7.52		
Casement/Awning	Casement Crank O/ Push O	Brighton		6"	LC-60	3/4"	36" x 72"	75.19	0.05	7.52		
	Awning/Project Out	Brighton		6"	R-50	3/4"	48" x 24"	75.19	0.05	7.52		
Fixed	Fixed	Brighton		6"	LC-50 / C-50 / R-50	3/4"	72" x 72" / 60" x 60" / 48" x 48"	75.19	<0.01	7.52		
Doors	Sliding	Brighton		5-7/8"	R-50	3/4"						
	Terrace Inswing	Brighton		5-15/16"	R-50	3/4"						
	Folding	Brighton				3/4"						
	Telescopic	Brighton				3/4"						
VINYL												
Hung	Single Hung	Manchester / AdvantEdge / Crusader		3-1/4"	R-35 / R-35 / DP-50	3/4"	40" x 63" / 40" x 63" / 36" x 84"	52.63 / 52.63 / 75.0	0.10 / 0.10 / 0.07	5.43 / 5.43 / 7.52		
	Double Hung	Manchester / AdvantEdge / Crusader		3-1/4"	R-40 / R-40 / DP-50	3/4"	40" x 63" / 40" x 63" / 36" x 84"	60.15 / 60.15 / 75.0	0.16 / 0.16 / 0.06	7.52 / 7.52 / 7.52		
Casement	Crank Out	Manchester / AdvantEdge / Crusader		3-1/4"	R-40 / R-40 / DP-50	3/4"	40" x 63" / 40" x 63" / 36" x 84"	60.15 / 60.15 / 75.0	0.16 / 0.16 / 0.06	7.52 / 7.52 / 7.52		
	Crank Out	VuPoint / V300		3-1/4"	CW-50	1"	36" x 78"	75.19	0.01	7.50		
Awning	Crank Out	Manchester / AdvantEdge / Crusader		3-1/4"	R-40 / R-40 / DP-50	3/4"	48" x 18" / 48" x 18" / 48" x 24"	60.15 / 60.15 / 75.19	0.03	6.06 / 6.06 / 7.52		
	Crank Out	VuPoint / V300		3-1/4"	CW-50	1"	60" x 32"	75.19	0.01	7.50		
Slider	Horizontal	Manchester / AdvantEdge / Crusader		3-1/4"	R-40 / R-40 / DP-50	3/4"	63" x 44"	60.15 / 60.15 / 75.19	0.05 / 0.05 / 0.01	6.06 / 6.06 / 7.52		
Fixed	Fixed	Manchester / AdvantEdge / Crusader		3-1/4"	R-35 or R-40 / R-35 or R-40 / DP-50	3/4"	48" x 48" / 48" x 48" / 60" x 72"	52.63 or 60.15 / 52.63 or 60.15 / 75.19	0.01	6.06 / 6.06 / 7.52		
	Fixed	VuPoint / V300		3-1/4"	CW-50	1"	78" x 78"	75.19	0.01	7.50		
Doors	Sliding	Manchester / AdvantEdge / Crusader		5"	R-35 / R-35 / DP-50	1"		52.50 / 52.50 / 75.19	0.09	5.25		



Cover Photo:
Monroe Street Market
Catholic University of America
Washington, DC
Architect: KTG Architecture
Contractor: Bozzuto Construction
Dealer: Architectural Glass & Metal
Segment: Mixed Use

Kalahari Condominiums
Harlem, New York
Architect: Schwartz Architects/GF55 Partners LLP
Dealer: L & M Builders Group
Developer: FSLM Associates LLC
Segment: Condominiums/Mixed Use



Learn more about
Quaker Architectural Windows



QUAKER
COMMERCIAL WINDOWS AND DOORS

www.QuakerCommercialWindows.com

Phone: (800) 347-0438

Fax: (573) 469-4151



At www.quakercommercialwindows.com you can see a comprehensive list of products, features, options, test data, downloadable specs and CADs, plus more. It's all just a couple of clicks away. If printed materials work better for you, ask your Quaker representative for our most recent Architectural Binder for your office.